

AUTOMOTIVE CATALOGUE



AGRINET AUTOMOTIVE CONTENT

<i>Automotive Parts</i>	3
<i>Grease Nipples</i>	11
<i>Fuses</i>	12
<i>Globes & Bulbs</i>	17
<i>Lights</i>	21
<i>Switches</i>	22
<i>Terminals</i>	25
<i>Automotive Wire</i>	33
<i>Auto Clamps</i>	34
<i>Auto Reflectors</i>	35
<i>Emergency & Warning</i>	39
<i>First Aid</i>	40
<i>Tarpaulins</i>	41
<i>Cargo Net</i>	42
<i>Rubber Insertion</i>	43
<i>Battery Accessories</i>	44
<i>Jacks</i>	47
<i>Lubricants</i>	49
<i>Engine Additives</i>	53
<i>Car Care</i>	56
<i>Engine Protection</i>	66
<i>Strapping & Tie Downs</i>	68
<i>Towing</i>	77
<i>Tyre Repair</i>	78
<i>Tyre Valves</i>	87
<i>Auto Filters</i>	90
<i>Grease & Oil Pumps</i>	93
<i>Fuel Transfer</i>	97

Please be aware that due to the ever expanding and extensive current range of products displayed in this catalogue, products available may vary from goods depicted or described. At the time of going to print, great care and effort was undertaken to ensure that details provided in the catalogue are accurate. Agrinet cannot be held liable for any omissions or errors that might have occurred during the development of this catalogue.

For any questions regarding Automotive Products, please contact the Agrinet Automotive Department / Service Centre at Samrand: (012) 657 2222 | Bellville: (021) 959 5420.

Agrinet reserves the right at all times to make changes to stocked ranges and products. Please refer to www.agrinet.co.za for all the latest information. E&OE.

Ajay Key Steel



Use for mounting shafts and pulleys.

AO900/7081	1/2X12INCH S1355
AO900/7049	1/4X12INCH S1361
AO900/7065	3/8X12INCH S1363
AO900/7057	5/16X12INCH S1362
AO900/7079	5/18X12INCH
AO900/7142	10X300MM
AO900/7146	12X300MM
AO900/7127	6X300MM
AO900/7138	8X300MM

Windscreen Wiper X2



High-quality multi-edge rubber blade.

AO260/0692	14INCH
AO260/0846	15INCH
AO260/0986	16INCH
AO260/1125	18INCH
AO260/1126	19INCH
AO260/2121	20INCH

AO400/4616/P

Light Flasher Unit 12V 3PEN

U-PART



General-purpose replacement flasher unit. Prepacked. Also available unpacked at code AO400/4616.

AO400/4616

Autoshop Light Flasher Unit 12V 3PEN

U-PART



General-purpose replacement flasher unit.

AO400/4550/P

Light Flasher Unit 12V 2 PIN

U-PART



General-purpose replacement flasher unit. Prepacked. Also available unpacked at code AO400/4550.

AO400/4550

Autoshop Light Flasher Unit 12V 2PEN

U-PART



General-purpose replacement flasher unit.

AO625/6298

Air Pressure Gauge Tractor 0-600KPA



Multi-purpose air liquid gauge.

AO600/1020/P

Autoshop Feeler Gauge 26 Blade



Feeler gauge with 26 blades for precise measurement.

AO450/3413/P
Champion Spark Plug
N7YCX X4

U-PART



Top quality sparkplug for use with internal combustion petrol engines. Prepacked. Also available unpacked. AO450/3413.

AO450/1843/P
Champion Spark Plug
N9YC X4

U-PART



Top quality sparkplug for use with internal combustion petrol engines. Prepacked. Also available unpacked. AO450/1843.

AO450/2270/P
Champion Spark Plug
N12YC X4

U-PART



Top quality sparkplug for use with internal combustion petrol engines. Prepacked. Also available unpacked. AO450/2270.

AO450/3916/P
Champion Spark Plug
CJ8 X1

U-PART



Top quality sparkplug for use with internal combustion petrol engines. Prepacked. Also available unpacked. AO450/3916.

AO450/2831/P
Champion Spark Plug
J8C

U-PART



Top quality sparkplug for use with internal combustion petrol engines. Prepacked. Also available unpacked. AO450/2831.

AO450/4427PRE/P
Ngk Spark Plug
BP6ES X4

U-PART



Top quality for use with internal combustion petrol engines. Prepacked. Also available unpacked. AO450/4427.

AO450/3916
Spark Plug
CJ8

CHAMPION



For use with internal combustion petrol engines.

AO450/2831
Spark Plug
J8C

CHAMPION



For use with internal combustion petrol engines.

AO450/2270
Spark Plug
N12YC

CHAMPION



For use with internal combustion petrol engines.

AO450/3412
Spark Plug
N7Y

CHAMPION



For use with internal combustion petrol engines.

AO450/3413
Spark Plug
N7YCX

CHAMPION



For use with internal combustion petrol engines.

AO450/1843
Spark Plug
N9YC

CHAMPION



For use with internal combustion petrol engines.

AO450/4427
Spark Plug
BP6ES

NGK



For use with internal combustion petrol engines.

AO450/4490
Spark Plug
BP6HS

NGK



For use with internal combustion petrol engines.

AO450/4567
Spark Plug
BP7ES

NGK



For use with internal combustion petrol engines.

AO450/4440
Spark Plug
BPR6ES

NGK



For use with internal combustion petrol engines.

AO757/0815
Hose Gas SABS Orange
8MM 30M



Superior quality gas hose complies to SABS 1156 2000 spec.

Hose Compressor Pm



Airline hose ideal for compressors inflation and welding.

AO757/0810	6MM
AO757/0812	8MM

AUTOMOTIVE PARTS

AO277/0970/P

License Holder
SNGL

U-PART



Semi-waterproof. Clear screw on lens. Complete with mounting bracket. Also available unpacked at code AO277/0970.

AO277/0970

License Holder Single H/Duty
Stirling



Semi-waterproof clear screw-on lens.

AO277/1271

License Holder Single Heavy
Duty Stirling



Top quality, waterproof. Lens secured with 4 screws.

HW1940937

Pump Car Hand
PCE C01B03 PCL



Double head pump hand piece to push or pull.

HW0280623

Gauge Air Service Type Tpg4D05
Pcl



For measuring tire pressure. Double connections 80 to 820kPa.

HW0280607

Gauge Air Pocket Type Tpg1D05
Pcl



For measuring tire pressure. Fits in pocket like a pen. Fifty tot 340kPa.

HW2580200

Funnel Plastic Jumbo
250MM

U-PART



250mm Plastic funnel. Oil and chemical resistant. With filter gauze.

HW2580772

Funnel Plastic
160MM TO 165MM

U-PART



Plastic funnel with flexible spout and filter gauze. Top diameter 165mm, bottom diameter 16mm, height 176mm, hose diameter 13mm and length +- 220mm.

HW2581442

Funnel Plastic Offset + Gauze
160MM



1.3L Capacity. Chemical and oil resistant. Anti splash rim. Removable brass filter.

HW2580209

Funnel Set Off 4

U-PART



50mm, 75mm, 100mm and 120mm.
Made from polyethylene.

HW2580829

Funnel Tin Pressol

170MM



3.2L Capacity. Tin plate galvanised. Anti-splash rim. Removable brass filter.

AO300/1202

Hooter Flat Round

12V

AUTOSHOP



12V Mini clear tone. Universal. Complete with mounting bracket.

AO300/1202/P

Hooter Flat Round

12V

U-PART



12V Mini clear tone. Universal. Complete with mounting bracket. Also available unpacked at code AO300/1202.

AO400/9800/P

Number Plate Holder

U-PART



Universal. Black. Standard size. Prepacked. Also available unpacked at code AO400/9800.

AO400/9800

Number Plate Holder



Universal. Black. Standard size.

AO270/1000

Radiator Cap



Constructed of non-corrosive steel for longer life. Gaskets are of EPDM to withstand high fluctuating temperatures and to ensure proper sealing.

AO270/1000/P

Radiator Cap

SG3-4/7 RAMX1

U-PART



Constructed of non-corrosive steel for longer life.

AO270/1017

Radiator Cap

TG3-18



Constructed of non-corrosive steel for longer life. Gaskets are of EPDM to withstand high fluctuating temperatures and to ensure proper sealing.

Packing Rubber Cork 1Mx300Mm



General purpose packing material for DIY use.

AO770/1501	1.5MM
AO770/1502	2.0MM
AO770/1503	3.0MM
AO770/1504	5.0MM

Packing Flexoid 1000 Mm 1M



General purpose packing material.

AO770/1015	0.4MM
AO770/1155	0.8MM
AO770/1309	1.5MM

Packing Non-Asbestos 1000Mm 500Mm



General purpose packing material.

AO770/1461	0.8MM
AO770/1462	1.5MM

AO900/7636

O-Ring Assortment Metric Type 8B 401PCS

KENORON



Rubber o-rings suitable for automotive, industrial or plumbing use.

AO759/1685

Pipe Brake Truck Trailer Compl RED



Auto-coil vacuum brake hoses for articulated vehicles.

AO759/1820

Pipe Brake Truck Trailer Compl YELLOW



Auto-coil vacuum brake hoses for articulated vehicles.

AO762/0205

Quality Insulation Tape Black 10M



Top quality tape for warm and cold isolation.

AO762/0240

Quality Insulation Tape Black 20M



Top quality tape for warm and cold isolation.

HW1942316

Pump Motor Gauge For Super Pump



HW1940082 is discontinued.

HW1940236

Pump Car Tractor Senior Pump



Heavy duty with a 1.8m air pipe that is serviceable. Washer at HW1941933. Hose at HW1941224.

AO627/0025R

Hand Pump

U-PART



Plastic grip, steel foot with anti-slip pedal, without gauge, rubber hose with double head for Schrader, Dunlop and Presta valve.

HW1940074

Economy Car Pump

U-PART



Hand pump for inflating motor and bicycle tyres. Can also be used camping and swimming pool equipment.

HW1940510

Car Foot Pump Car SINGLE BARREL

U-PART



Use for inflating tyres. Single cylinder. Pressure gauge included.

HW1940520

Car Foot Pump Car DOUBLE BARREL

U-PART



Use for inflating tyres. Double cylinder. Pressure gauge included.

HW1941593

Pump Thumblock H/Duty CO2H03 PCL



This connection fits the air hose to the valve and is locked on with a sliding connector.

HW1941577

Pump Thumblock FPA03



Thumb lock that connects the air hose to the valve. To secure it to the valve one has to lock it on the valve with your thumb. Part of car hose HW1941224.

AO771/0316/P

Pump Chuck Std Clip-On

U-PART



Clip-on air chuck. Prepacked.

HW1941712

Pump Connector Hose P10 STRAIGHT



This connector acts as a one way valve and connects the hose to the motor pump (HW1941224).

AO430/0019/P
Test Light
6/12/24V

U-PART



Volt tester complete with cover for the point of the tester and with a crocodile clip at the end of the electric wire to earth the tester. Imported. Also available unpacked at code AO430/0019.

AO430/0019
Test Light 6/12/24V



Test light complete with cover.

Cotton Covered Hose Pm



Cotton covered fuel hoses are manufactured with a PVC tube and feature a polyester braided cover providing protection against ozone, abrasion or accidental cutting.

AO757/3000	3MM
AO757/3008	5MM
AO757/3010	6MM
AO757/3014	8MM
AO757/3018	10MM

HW1942220
Pump Motor Repair Kit Super Pump



Repair kit for Senior Pump HW1940236.

Reinforced Fuel Hose Pm



Reinforced hose ideal for fuel.

AO757/0808	12MM
AO757/0379	6.3MM
AO757/0514	8MM

Heater Hose Pm

DUNLOP



Premium hose designed for maximum durability. Resistance to high temperatures for extended periods. Virtually unaffected by coolants.

AO755/3961	12MM
AO755/3965	20MM

AO757/0813
Pipe Compressor Black
12MM



Black pipe is the most commonly used pipe recommended for compressed air systems. It is strong and durable.

HW1941224
Pump Car Hose Super & Senior Pump
1.8M



Complete with screw in connector and thumb lock. For HW1940236.

GREASE NIPPLES

Grease Nipple Straight



Precision manufactured dustproof grease nipples.

AO900/4805	1/4INCH BSF
AO900/4856	1/4INCH BSP
AO900/4811	1/4INCH UNF LONG
AO900/4791	1/4INCH UNF/SAE
AO900/4783	1/8INCH BSP
AO900/5262	M10X1.5MM
AO900/5261	M10X1MM
AO900/5097	M6X1MM
AO900/4816	M8X1MM

Grease Nipple 45 Deg



Precision manufactured dustproof grease nipples.

AO900/5263	M10X1MM
AO900/4909	M8X1MM
AO900/4902	1/4INCH BSP
AO900/4864	1/8INCH BSP
AO900/5100	M6X1MM

Grease Nipple 90 Deg



Precision manufactured dustproof grease nipples.

AO900/4945	1/8INCH BSP
AO900/5127	M6X1MM
AO900/5011	M8X1MM

Grease Nipple Straight

U-PART



Top-quality precision-manufactured dustproof grease nipples. Also available unpacked.

AO900/4805/P	1/4INCH BSF X5
AO900/4856/P	1/4INCH BSP X5
AO900/4791/P	1/4INCH UNF X5
AO900/4783/P	1/8INCH BSP X5
AO900/5261/P	M10X1 X5
AO900/5097/P	M6X1 X5
AO900/4816/P	M8X1 X5

Grease Nipple 45 Deg

U-PART



Top-quality precision-manufactured dustproof grease nipples. Also available unpacked.

AO900/5263/P	M10X1 X5
AO900/4902/P	1/4INCH BSP X5
AO900/4864/P	1/8INCH BSP X5
AO900/4909/P	M8X1 X5

AO900/4945/P
Grease Nipple
90DEG 1/8INCH BSP X5

U-PART



Top-quality precision-manufactured dustproof grease nipples. Also available unpacked.

AO290/0123
Japanese Type Fuse
7.5 AMP MINI

U-PART



Prepack fuses for automotive use.

AO290/0123/P
Mini Fuse
7.5AMP

U-PART



Prepack fuses for automotive use.

AO290/0132
Japanese Type Fuse
10 AMP MINI

U-PART



Prepack fuses for automotive use.

AO290/0132/P
Mini Fuse
10AMP

U-PART



Prepack fuses for automotive use.

AO290/0141
Japanese Type Fuse
15 AMP MINI

U-PART



Prepack fuses for automotive use.

AO290/0141/P
Mini Fuse
15AMP

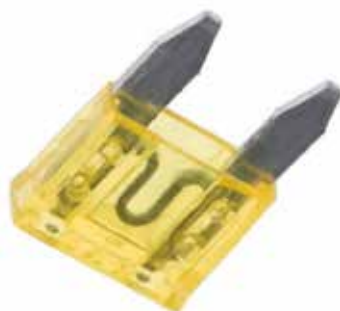
U-PART



Prepack fuses for automotive use.

AO290/0152
Japanese Type Fuse
20 AMP MINI

U-PART



Prepack fuses for automotive use.

AO290/0152/P
Mini Fuse
20AMP

U-PART



Prepack fuses for automotive use.

AO290/0162
Japanese Type Fuse
25 AMP MINI

U-PART



Prepack fuses for automotive use.

AO290/0162/P
Mini Fuse
25AMP

U-PART



Prepack fuses for automotive use.

AO290/0175
Japanese Type Fuse
30 AMP MINI

U-PART



Prepack fuses for automotive use.

AO290/0175/P
Mini Fuse
30AMP

U-PART



Prepack fuses for automotive use.

AO290/0105/P
Mini Fuse
ASSORTMENT

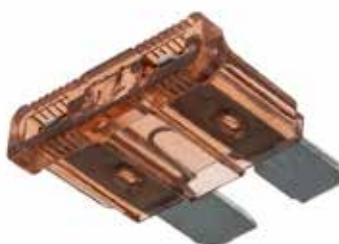
U-PART



Prepack fuses for automotive use.

AO290/0303
Japanese Type Fuse
7.5 AMP

U-PART



Prepack fuses for automotive use.

AO290/0303/P
Japanese Type Fuse X10
7.5AMP

U-PART



Prepack fuses for automotive use.

AO290/0304
Japanese Type Fuse
10 AMP

U-PART



Prepack fuses for automotive use.

AO290/0304P
Japanese Type Fuse X10
10AMP

U-PART



Prepack fuses for automotive use.

AO290/0305
Japanese Type Fuse
15AMP

U-PART



Fuses for automotive use

AO290/0305/P

Japanese Type Fuse X10

15AMP

U-PART



Prepack fuses for automotive use.

AO290/0306

Japanese Type Fuse

20 AMP

U-PART



Prepack fuses for automotive use.

AO290/0306/P

Japanese Type Fuse X10

20AMP

U-PART



Prepack fuses for automotive use.

AO290/0307

Japanese Type Fuse

25AMP

U-PART



Fuses for automotive use

AO290/0307/P

Japanese Type Fuse X10

25AMP

U-PART



Prepack fuses for automotive use.

AO290/0308

Japanese Type Fuse

30 AMP

U-PART



Prepack fuses for automotive use.

AO290/0308/P

Japanese Type Fuse X10

30AMP

U-PART



Prepack fuses for automotive use.

AO290/0101/P

Japanese Type Fuse

ASSORTED X10

U-PART



Consists of 2 x AO290/0304/1 (10A), 2x AO290/0305/1 (15A), 2 x AO290/0306/1 (20A) 2 x AO290/0307/1 (25A) 2 x AO290/0308/1 (30A) fuses.

AO290/1269

Glass Fuse

32 MM 10 AMP

U-PART



Prepack fuses for automotive use.

AO290/1269/P
Glass Fuse 32mm X10
10AMP

U-PART



Prepack fuses for automotive use.

AO290/1404
Glass Fuse
32MM 15 AMP

U-PART



Prepack fuses for automotive use.

AO290/1404/P
Glass Fuse 32mm X10
15AMP

U-PART



Prepack fuses for automotive use.

AO290/1552
Glass Fuse
32MM 20 AMP

U-PART



Prepack fuses for automotive use.

AO290/1552/P
Glass Fuse 32mm X10
20AMP

U-PART



Prepack fuses for automotive use.

AO290/1692
Glass Fuse
32MM 25 AMP

U-PART



Prepack fuses for automotive use.

AO290/1692/P
Glass Fuse 32mm X10
25AMP

U-PART



Prepack fuses for automotive use.

AO290/2430/P
Glass Fuse X10
Assorted x 10

U-PART



Consists of 3 x AO290/1269/1 (10A), 3 x AO290/1404/1 (15A), 2 x AO290/1552/1 (20A) and 2 x AO290/1692/1 (25A) fuses.

AO290/0100/P
Ceramic Fuse
ASSORTED X10

U-PART



Consists of 2 x AO290/0688/1 (8A) 2 x AO290/0823/1 (16A), 2 x AO290/0890/1 (20A) and 4 x AO290/0963/1 (20A) fuses.

Ceramic Fuse 5 Amp

U-PART



Prepack fuses for automotive use.

AO290/0548/P 5 AMP - Packaged

AO290/0548 5 AMP - Loose

Ceramic Fuse 8 Amp

U-PART



Prepack fuses for automotive use.

AO290/0688/P 8 AMP - Packaged

AO290/0688 8 AMP - Loose

Ceramic Fuse 16 Amp

U-PART



Prepack fuses for automotive use.

AO290/0823/P 16 AMP - Packaged

AO290/0823 16 AMP - Loose

Ceramic Fuse 20 Amp

U-PART



Prepack fuses for automotive use.

AO290/0890/P 20 AMP - Packaged

AO290/0890 20 AMP - Loose

Ceramic Fuse 25 Amp

U-PART



Prepack fuses for automotive use.

AO290/0963/P 25 AMP - Packaged

AO290/0963 25 AMP - Loose

Ceramic Fuse 30 Amp

U-PART



Prepack fuses for automotive use.

AO290/0971/P 30 AMP - Packaged

AO290/0971 30 AMP - Loose

GLOBES & BULBS

AO410/9479

Globe Single Filament 24V
G604



Replacement stop tail and flasher bulb.

AO410/9479/P

Globe Sngl Filament
24V G604X2

U-PART



Replacement globe 12V 6W for panel warning side and interior bulbs. Prepacked. Also available unpacked.

AO410/9185

Globe Single Filament 12V
G601 G53



Replacement stop tail and flasher bulb.

AO410/9185/P

Globe Single Filament
12V G601X2

U-PART



Replacement globe 12V 4W for panel warning side and interior bulbs. Prepacked. Also available unpacked.

AO410/9480

Globe Single Filament 12V
G606



Replacement stop tail and flasher bulb.

AO410/9480/P

Globe Single Filament
12V G606X2

U-PART



Replacement globe 12V 4W for panel warning side and interior bulbs. Prepacked. Also available unpacked.

AO410/9321

Globe Single Filament 12V
G603



Replacement stop tail and flasher bulb.

AO410/9037/P

Globe Festoon 12V
G53X2

U-PART



Replacement 12V globe 1cp for panel warning side and interior bulbs. Prepacked. Also available unpacked.

AO410/6976

Globe Single Filament 24V
G1304



Replacement stop tail and flasher bulb.

GLOBES & BULBS

AO410/6976/P
Globe Single Filament
24V G1304X2

U-PART



Replacement globe 12V 6W for panel warning side and interior bulbs. Prepacked. Also available unpacked.

AO410/6925
Globe Single Filament 12V
G67



Replacement stop tail and flasher bulb.

AO410/6925/P
Globe Single Filament
12V G67X2

U-PART



Replacement globe 12V 4W for panel warning side and interior bulbs. Prepacked. Also available unpacked.

AO410/5031
Globe Single Filament 24V
G333 G692



Replacement stop tail and flasher bulb.

AO410/5031/P
Globe Single Filament
24V G692X2

U-PART



Replacement globe 12V 6W for panel warning side and interior bulbs. Prepacked. Also available unpacked.

AO410/3896
Globe Single Filament 24V
G339



Replacement stop tail and flasher bulb.

AO410/3896/P
Globe Single Filament
24V G339X2

U-PART



Replacement globe 12V 6W for panel warning side and interior bulbs. Prepacked. Also available unpacked.

AO410/6313
Globe Single Filament 24V
G334



Replacement stop tail and flasher bulb.

AO410/6313/P
Globe Dbl Filament
24V G334X2

U-PART



Replacement globe for automotive use. Prepacked. Also available unpacked.

GLOBES & BULBS

AO410/9568

Globe Single Filament 12V
G1073



Replacement stop tail and flasher bulb.

AO410/9568/P

Globe Single Filament
12V G1073X2

U-PART



Replacement globe 12V 4W for panel warning side and interior bulbs. Prepacked. Also available unpacked.

AO410/4100

Globe Wedge Type 12V
G501



Replacement globe for automotive use.

AO410/0772/P

Globe Dbl Filament
12V G523X2

U-PART



Replacement globe for automotive use. Prepacked. Also available unpacked.

AO410/5783

Globe Dbl Filament 12V
G1034



Replacement globe for automotive use.

AO410/5783/P

Globe Dbl Filament
12V G1034X2

U-PART



Replacement globe for automotive use. Prepacked. Also available unpacked.

AO410/7395

Globe Festoon 12V
G254



Replacement bulb 39x115mm, 5W.

AO410/7395/P

Globe Festoon 12V
G254X2

U-PART



Replacement 12V globe 1cp for panel warning side and interior bulbs. Prepacked. Also available unpacked.

AO410/0772

Globe Head Light 35/35W 12V
G523



Globe for head light of vehicle and tractor.

GLOBES & BULBS

AO410/1338
Globe Head Light P45T 12V
G452



Replacement globe for automotive use.

AO410/1338/P
Globe Head Lamp 12V
P45T G452X1

U-PART



Replacement globe for automotive use.
Prepacked. Also available unpacked.

AO410/0455
Globe Dbl Filament 12V
G414



Replacement globe for automotive use.

AO410/0455/P
Globe Dbl Filament
12V G414X2

U-PART



Replacement globe for automotive use.
Prepacked. Also available unpacked.

AO410/2466
Globe Halogen H3 Pk22S 12V
55W



Replacement globe for automotive use.

AO410/2466/P
Globe Halogen 12V
H3 PK22S 55W

U-PART



Replacement globe for automotive use.
Prepacked. Also available unpacked.

AO410/1893
Globe Halogen
H4 P43T 12V 60/55W



Replacement globe for automotive use.

AO410/1893/P
Globe Halogen 12V
H4 P43T 60/55W

U-PART



Replacement globe for automotive use.
Prepacked. Also available unpacked.

AO410/9580
Globe Halogen
H1 P14.5S 12V 55W



Replacement globe for automotive use.

AO400/9556

Light Rear Stop/Flasher/Number Plate E75



Combination stop tail indicator and number-plate. E-mark approved.

AO400/1072

Light Head Compl Rubber Plough Lamp



Sealed beam, semi-waterproof, complete with all wiring and heavy-duty mounting bracket.

AO400/0254

Light Sealed Beam 12V 3Pin 135MM 4003



Replacement head light, sealed 128V with globe strength 55/375W.

AO400/4953

Rear Flasher Light SB13SC



Semi-sealed waterproof amber lens ideal for trucks and trailers.

AO400/4952

Rear Stop Light SB14DC



Semi-sealed waterproof amber lens ideal for trucks and trailers.

AO400/4958

Light Rear Led Stop Red 12-24V Complete



This light is suitable for truck or trailer applications. It is 100mm round light with a sealed polycarbonate lens and ABS housing.

AO400/4959

Light Rear Led Flasher Amber 12-24V Complete



This light is suitable for truck or trailer applications. It is 100mm round light with a sealed polycarbonate lens and ABS housing.

AO400/4950

Light Mounting Platform X2



Heavy-duty white powder (epoxy)-coated metal bracket. Use with AO400/4952 and AO400/4953.

AO400/4975/P

Trailer Wiring Kit Complete

U-PART



Complete trailer wiring kit for trailers.

AO390/0890/P
Ignition Switch

U-PART



Heavy-duty. Suitable for trucks, busses and tractors. 24V. Prepacked. Also available unpacked at code AO390/0890.

AO390/0887/P
Ignition Switch 4 Position

U-PART



Universal ignition switch suitable for 12V 4-stud screw on terminals standby/off/ignition/start. Packed. Also available unpacked at code AO390/0887.

AO390/1174/P
Push Switch Button H/Duty

U-PART



Plastic. Easy to fit. Screw terminals. Ideal for hooters. Also available unpacked at code AO390/1174.

AO390/1603/P
Push/Pull Switch

U-PART



Two screw on terminals. Also available unpacked at code AO390/1603.

AO390/1610/P
Toggle Switch Metal On/Off

U-PART



Metal heavy duty. Easy installation. Two positions- on/off. Push in terminal. Packed. Also available unpacked at code AO390/1610.

AO390/1034/P
Toggle Switch On/Off
12V 20AMP

U-PART



Plastic. Easy to fit. Push-on terminals. Also available unpacked at code AO390/1034.

AO390/0739/P
Toggle Switch On/Off/On
12V 20AMP

U-PART



Plastic. Easy installation. Three positions with off position in the middle. Packed. Also available unpacked at code AO390/0739.

AO330/0361/P
Autoshop Relay
12V

U-PART



Four-pin applications. Prepacked. Also available unpacked at code AO330/0361.

AO330/0361
Relay 12V 2 1Tem
C4001



Four-pin applications.

AO390/0890

Ignition Switch H/Duty



Heavy-duty suitable for trucks, busses and tractors. 24V.

AO390/0887

Ignition Switch 4 Position



Universal ignition switch suitable for 12V 4-stud screw on terminals standby/off/ignition/start.

AO390/1174

Push Switch Button H/Duty Metal



Plastic. Easy to fit. Screw terminals. Ideal for hooters.

AO390/1603

Push/Pull Switch



Two screw on terminals.

AO390/1610

Toggle Switch Metal On/Off



Metal 2-way toggle. Easy to install. Press-in terminals.

AO390/1034

Toggle Switch On/Off

12V 20AMP



Plastic. Easy to fit. Push-on terminals.

AO390/0739

Switch Toggle On/Off/On

12V 20AMP



Plastic. Easy to fit. Three-position with centre off. Push-on terminals.

AO390/0445

Light Switches 3-Position



Push-pull type switch with off dim and bright positions.

AO390/1036

Ignition Switch Massey

35630 M/F GENERATOR T



Pre-heat ignition switch press-on terminals.

AO390/1037

Ignition Switch Massey

34228 M/F ALT TYPE



Pre-heat ignition switch press-on terminals.

AO762/0082

Terminal Blue Butt Connector Ferrule

1.5-2.5 LC250



Insulated auto-electric terminals.

AO762/0082/P

Terminal Blue Butt Connector Ferrule

1.5-2.5 LC250

U-PART



Ideal for use in automobile applications. Fully insulated connectors.

AO762/0078

Terminal Red Butt Connector Ferrule

0.5-1.5M LC150



Insulated auto-electric terminals.

AO762/0078/P

Terminal Red Butt Connector Ferrule

0.5-1.5M

U-PART



Ideal for use in automobile applications. Fully insulated connectors.

AO762/0086

Terminal Yellow Butt Connector Ferrule

4.0-6 LC400



Insulated auto-electric terminals.

AO762/0086/P

Terminal Yellow Butt Connector Ferrule

4.0-6 LC400

U-PART



Ideal for use in automobile applications. Fully insulated connectors.

AO762/0098

Terminal Blue Female Bullet

1.5-2.5MM 5MM L



Insulated auto-electric terminals.

AO762/0098/P

Terminal Blue Female Bullet

1.5-2.5Mm 5Mm L

U-PART



All terminals are polyvinyl chloride insulated and have easy entry apertures for quick cable insertion.

AO762/0090

Terminal Red Female Bullet

0.5-1.5MM 4MM L



Insulated auto-electric terminals.

AO762/0090/P

Terminal Red Female Bullet

0.5-1.5MM 4MM L

U-PART



All terminals are polyvinyl chloride insulated and have easy entry apertures for quick cable insertion.

AO762/0118

Terminal Blue Fully Insul Female Bullet

1.5-2

U-PART



Insulated auto-electric terminals.

AO762/0118/P

Terminal Blue Fully Insul Female Rec

1.5-2.

U-PART



All terminals are polyvinyl chloride insulated and have easy entry apertures for quick cable insertion.

AO762/0138

Terminal Red Fully Insul Female Rec

0.5-1.5M LSFF0



Insulated auto-electric terminals.

AO762/0138/P

Terminal Red Fully Insul Female Rec

0.5-1.5M Lsff0

U-PART



All terminals are polyvinyl chloride insulated and have easy entry apertures for quick cable insertion.

Terminal Red Female Rec Push On



Insulated auto-electric terminals.

AO762/0114 0.5-1.5MM KA 2.8MM

AO762/0151 0.5-1.5MM KA 4.8MM

AO762/0031 0.5-1.5MM KA 6.3MM

Terminal Red Female Rec Push On

U-PART



Female terminal design. Semi insulating and protects electrical connections.

AO762/0114/P 0.5-1.5MM 2.8MM

AO762/0151/P 0.5-1.5MM 4.8MM

AO762/0031/P 0.5-1.5MM 6.3MM

Terminal Blue Female Rec Push On



Insulated auto-electric terminals.

AO762/0154 1.5-2.5MM K 4.8MM

AO762/0038 1.5-2.5MM K 6.3MM

AO762/0155 1.5-2.5MM K 7.7MM

Terminal Blue Female Rec Push On

U-PART



Female terminal design. Semi insulating and protects electrical connections.

AO762/0154/P 1.5-2.5MM K 4.8MM

AO762/0038/P 1.5-2.5MM K 6.3MM

AO762/0155/P 1.5-2.5MM K 7.7MM

Terminal Yellow Female Rec Push On



Insulated auto-electric terminals.

AO762/0122	4.0-6.0MM 9.5MM
AO762/0130	4.0-6.0MM 9.5MM

Terminal Yellow Female Rec Push On

U-PART



Female terminal design. Semi insulating and protects electrical connections.

AO762/0122/P	4.0-6.0MM 6.3MM
AO762/0130/P	4.0-6.0MM 9.5MM

Terminal Blue Fork



Insulated auto-electric terminals.

AO762/0054	1.5-2.5MM 4MM LF25004
AO762/0058	1.5-2.5MM 5MM LF25005

Terminal Blue Fork

U-PART



All terminals are polyvinyl chloride insulated and have easy entry apertures for quick cable insertion.

AO762/0054/P	1.5-2.5Mm
AO762/0058/P	1.5-2.5Mm 5Mm Lf25005

Terminal Red Fork



Insulated auto-electric terminals.

AO762/0152	0.5-1.5MM 3MM LF15003
AO762/0005	0.5-1.5MM 4MM LF15004
AO762/0006	0.5-1.5MM 5MM LF15005

Terminal Red Fork

U-PART



All terminals are polyvinyl chloride insulated and have easy entry apertures for quick cable insertion.

AO762/0152/P	0.5-1.5MM 3MM
AO762/0005/P	0.5-1.5MM 4MM LF15004
AO762/0006/P	0.5-1.5MM 5MM LF15005

AO762/0102

Terminal Blue Male Bullet

1.5-2.5MM 5MM LZ250

U-PART



Insulated auto-electric terminals.

AO762/0102/P

Terminal Blue Male Bullet

1.5-2.5MM 5MM

U-PART



All terminals are polyvinyl chloride insulated and have easy entry apertures for quick cable insertion.

AO762/0094

Terminal Red Male Bullet

0.5-1.5MM 4MM LZ1500

U-PART



Insulated auto-electric terminals.

AO762/0094/P
Terminal Red Male Bullet
0.5-1.5MM 4MM

U-PART



All terminals are polyvinyl chloride insulated and have easy entry apertures for quick cable insertion.

AO762/0042
Terminal Male Tab Blue
1.5-2.5MM 6.3MM LT2506

U-PART



Insulated auto-electric terminals.

AO762/0042/P
Terminal Blue Male Tab
1.5-2.5MM 6.3MM

U-PART



All terminals are polyvinyl chloride insulated and have easy entry apertures for quick cable insertion.

AO762/0034
Terminal Male Tab Red
0.5-1.5MM 6.3MM LT15063

U-PART



Insulated auto-electric terminals.

AO762/0034/P
Terminal Red Male Tab
0.5-1.5MM 6.3MM

U-PART



All terminals are polyvinyl chloride insulated and have easy entry apertures for quick cable insertion.

AO762/0126
Terminal Male Tab Yellow
4.0-6.0MM 6.3MM LT40



Insulated auto-electric terminals.

AO762/0126/P
Terminal Yellow Male Tab
4.0-6.0MM 6.3MM LT40

U-PART



All terminals are polyvinyl chloride insulated and have easy entry apertures for quick cable insertion.

AO762/0106
Terminal Piggy Back Blue
1.5-2MM 6.3MM LM2506

U-PART



Insulated auto-electric terminals.

AO762/0106/P
Terminal Blue Piggy Back
1.5-2MM 6.3MM

U-PART



All terminals are polyvinyl chloride insulated and have easy entry apertures for quick cable insertion.

AO762/0157
Terminal Pin Lug Blue
1.5-2MM LP25000



Insulated auto-electric terminals.

AO762/0157/P
Terminal Blue Pin Lug
1.5-2MM LP25000

U-PART



All terminals are polyvinyl chloride insulated and have easy entry apertures for quick cable insertion.

AO762/0153
Terminal Pin Lug Red
0.5X1MM LP15000



Insulated auto-electric terminals.

AO762/0153/P
Terminal Red Pin Lug
0.5X1MM LP15000

U-PART



All terminals are polyvinyl chloride insulated and have easy entry apertures for quick cable insertion.

Terminal Blue Ring Lug
1.5-2.5mm



Insulated auto-electric terminals.

AO762/0156	6MM LR25006
AO762/0070	4MM LR25004
AO762/0074	5MM LR25005
AO762/0165	10MM LR25010

Terminal Blue Ring Lug
1.5-2.5mm

U-PART



All terminals are polyvinyl chloride insulated and have easy entry apertures for quick cable insertion.

AO762/0070/P	4MM LR25004
AO762/0074/P	5MM LR25005
AO762/0156/P	6MM
AO762/0165/P	10MM

Terminal Ring Lug Red 0.5-1.5mm

U-PART



Insulated auto-electric terminals.

AO762/0062	4MM LR15004
AO762/0066	5MM LR15005
AO762/0160	10MM LR15010

Terminal Red Ring Lug 0.5-1.5mm

U-PART



All terminals are polyvinyl chloride insulated and have easy entry apertures for quick cable insertion.

AO762/0062/P	4MM LR15004
AO762/0066/P	5MM LR15005
AO762/0160/P	10MM

Terminal Ring Yellow 4.0-6.0mm



Insulated auto-electric terminals.

AO762/0158	6MM LR40006
AO762/0134	8MM LR40008
AO762/0170	13MM LR40013

Terminal Yellow Ring 4.0-6.0mm

U-PART



Yellow rubber PVC terminals insulated ring connector.

AO762/0158/P	6MM LR40006
AO762/0134/P	8MM
AO762/0170/P	13MM LR40013

AO257/0394
Cable Lug Sq40
12Mm Hole



Cable lug for battery cable.

AO257/0394/P
Cable Lug Sq40
12MM HOLE

U-PART



Cable lug for battery cable. Prepacked. Also available unpacked at code AO257/0394.

AO257/0254
Cable Lug Sq25
10Mm Hole



Cable lug for battery cable.

AO257/0510
Battery Terminal Acid Protectors
X2



1 x Positive and 1 x negative battery terminal acid protector.

AO257/1390
Terminal Negative
D4050



Bosch type negative terminal used to attach the wire to the terminal of the battery. Unpacked.

AO257/1390/P
Terminal Negative
X2

U-PART



Bosch type negative terminal used to attach the wire to the terminal of the battery. Also available unpacked.

AO257/1455
Terminal Quality Negative



Bosch type negative terminal used to attach the wire to the terminal of the battery.

AO257/1455/P
Terminal Quality Negative
X2

U-PART



Bosch type negative terminal used to attach the wire to the terminal of the battery. Also available unpacked.

AO257/1450
Terminal Quality Positive
X1



Bosch type positive terminal used to attach the wire to the terminal of the battery.

AO257/1450/P
Terminal Quality Positive
X2

U-PART



Bosch type positive terminal used to attach the wire to the terminal of the battery. Also available unpacked.

AO257/1250
Terminal Positive
D4052



Bosch type positive terminal used to attach the wire to the terminal of the battery. Unpacked.

AO257/1250/P
Positive Terminal
X2

U-PART



Bosch type positive terminal used to attach the wire to the terminal of the battery. Also available unpacked.

AO257/1457/P
Terminal Quality Negative
X1

U-PART



Bosch type negative terminal used to attach the wire to the terminal of the battery. Also available unpacked.

AO257/1452/P
Terminal Quality Positive
X1

U-PART



Bosch type positive terminal used to attach the wire to the terminal of the battery. Also available unpacked.

AO257/1392/P
Negative Terminal

U-PART



Bosch type negative terminal used to attach the wire to the terminal of the battery. Also available unpacked.

AO257/1257/P
Pos/Neg/Protector Terminal
X3

U-PART



Consists of 1x terminal positive AO257/1250 and 1x terminal negative AO257/1390 and 1x set of battery acid protectors.

AO257/1251/P
Positive Terminal

U-PART



Bosch type positive terminal used to attach the wire to the terminal of the battery. Also available unpacked.

AO257/1255/P
Terminal Positive & Negative
X2

U-PART



Consists of 1x terminal positive
AO257/1250 and 1x terminal negative
AO257/1390.

AO257/1460/P
Terminal Set Positive & Negative

U-PART



Consists of 1x terminal positive
AO257/1450 and 1x terminal negative
AO257/1455.

Electric Cable 1.60mm

PVC auto-wire.

AO758/0052	BLACK PM
AO758/0044	BLUE PM
AO758/0050	BROWNNPM
AO758/0046	GREEN PM
AO758/0048	GREY PM
AO758/0042	RED PM
AO758/0038	WHITE PM
AO758/0040	YELLOW PM

Electric Cable 2.50mm

PVC auto-wire.

AO758/0070	BLACK PM
AO758/0062	BLUE PM
AO758/0068	BROWN PM
AO758/0064	GREEN PM
AO758/0066	GREY PM
AO758/0060	RED PM
AO758/0056	WHITE PM
AO758/0058	YELLOW PM

Electric Wire 2.5mm 5M

U-PART



PVC auto-wire prepacked. Also available unpacked.

AO758/0070/P	5M BLK
AO758/0060/P	RED
AO758/0056/P	WHT

Electric Wire 1.6mm

U-PART



PVC auto-wire prepacked. Also available unpacked.

AO758/0052/P	5M BLK
AO758/0042/P	5M RED
AO758/0038/P	5M WHT
AO758/0040/P	5M YELLOW

AO758/0078
Electric Cable 6.30mm
RED PM



PVC auto-wire.

Electric Cable 4.0mm

PVC auto-wire.

AO758/0076	BLACK PM
AO758/0074	RED PM
AO758/0072	WHITE PM

Electric Cable 5-Core

For electrical wiring on trucks and trailers.

AO759/1391	3.5M TRAILER
AO759/1111	PM

Electric Cable 7-Core

For electrical wiring on trucks and trailers.

AO759/1113	PM
AO759/1537	

Battery Crocodile Clip



Connects an electrical cable to a battery or components. Suitable for grounding clips, test meter clips, battery terminal connection etc. Unpacked.

AO256/0765	25AMP
AO256/0766	50AMP
AO256/0764	10AMP
AO256/0764/P	10AMP X2
AO256/0765/P	25AMP X2
AO256/0766/P	50AMP X2

Clamp Hose 2Pce

U-PART



General-purpose metal hose clamp spanner and screwdriver fixing. Prepacked. Also available unpacked.

AO750/0002/P	10-22MM
AO750/0003/P	14-27MM
AO750/0004/P	17-38MM
AO750/0005/P	19-44MM
AO750/0006/P	32-57MM
AO750/0007/P	44-70MM
AO750/0001/P	6-17MM

Exhaust Pipe Clamp



Clamp for use with exhaust pipes. Electroplated. Available from 38mm to 64mm sizes. Also available in prepack.

AO199/0756	42MM
AO199/0616	38MM
AO199/1752	64MM
AO199/1035	48MM
AO199/1175	50MM
AO199/1310	54MM
AO199/1469	57MM
AO199/0896	45MM
AO199/0616/P	38MM
AO199/0756/P	43MM
AO199/0896/P	45MM
AO199/1035/P	48MM
AO199/1310/P	54MM
AO199/1175/P	52MM

Grip Clip



Manufactured from spring steel. Available in sizes from 6 mm to 37 mm.

AO900/0133	10-18MM 3MM S10
AO900/0141	12-22MM 4MM S12
AO900/0168	16-27MM 5MM S13
AO900/0176	19-32MM 6MM S14
AO900/0184	25-37MM 7MM S15
AO900/0117	6-11MM 2MM S8
AO900/0125	8-12MM 2.5MM S9

Grip Clip X10Pk

U-PART



Manufactured from spring steel. Available in sizes from 10mm to 32mm. Prepacked. Also available unpacked.

AO900/0133/P	10-18MM 3MM S10
AO900/0141/P	12-22MM 4MM S12
AO900/0168/P	16-27MM 5MM S13
AO900/0176/P	19-32MM 6MM S14

AO401/0019
Rectangular Reflector Stick-On
65 mm
AMBER



Self-adhesive tape allows for quick fixing.

AO401/0020
Rectangular Reflector Stick-On
65 mm
CLEAR



Self-adhesive tape allows for quick fixing.

AO401/0018
Rectangular Reflector Stick-On
65 mm
RED



Self-adhesive tape allows for quick fixing.

AO401/0014
Square Reflector Stick-On 90 mm
AMBER



Self-adhesive tape allows for quick fixing.

AO401/0012
Square Reflector Stick-On 90 mm
RED



Self-adhesive tape allows for quick fixing.

AO401/0013
Square Reflector Stick-On 90 mm
WHITE



Self-adhesive tape allows for quick fixing.

AO401/0012/P
Reflector Square Stick-On
RED 90 mm 2PK

U-PART



Self-adhesive tape allows for quick fixing.
Prepacked. Also available unpacked.

AO401/0013/P
Reflector Square Stick-On
WHT 90 mm 2PK

U-PART



Self-adhesive tape allows for quick fixing.
Prepacked. Also available unpacked.

AO401/0014/P
Reflector Square Stick-On Yellow
90 mm 2PK

U-PART



Self-adhesive tape allows for quick fixing.
Prepacked. Also available unpacked.

REFLECTORS

AO401/0018/P

Stick-On Rectangular Reflect Red

65 mm 2PK

U-PART



Self-adhesive tape allows for quick fixing. Prepacked. Also available unpacked.

AO401/0019/P

Stick-On Rectangular Reflect Amber

65 mm 2PK

U-PART



Self-adhesive tape allows for quick fixing.

AO401/0020/P

Stick-On Rectangular Reflect Clear

65 mm 2PK

U-PART



Self-adhesive tape allows for quick fixing.

AO401/0017

Reflector Flange Type 60 mm

AMBER



60 mm Diameter lens with electro-plated metal flange.

AO401/0015

Reflector Flange Type 60 mm

RED



60 mm Diameter lens with electro-plated metal flange.

AO401/0016

Reflector Flange Type 60 mm

WHT

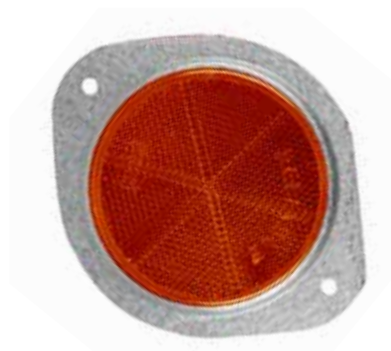


60 mm Diameter lens with electro-plated metal flange.

AO401/0008

Round Reflector 76 mm

AMBER



76 mm Diameter lens electro-galvanized metal flange.

AO401/0006

Round Reflector 76 mm

RED



76 mm Diameter lens electro-galvanized metal flange.

AO401/0007

Round Reflector 76 mm

WHT



76 mm Diameter lens electro-galvanized metal flange.

AO401/0015/P
Reflector Flange Red
60 mm 2PK

U-PART



60 mm diameter lens with electro-plated metal flange. Prepacked. Also available unpacked.

AO401/0016/P
Reflector Flange White
60 mm 2PK

U-PART



60 mm diameter lens with electro-plated metal flange. Prepacked. Also available unpacked.

AO401/0017/P
Reflector Flange Yellow
60 mm 2PK

U-PART



60 mm diameter lens with electro-plated metal flange. Prepacked. Also available unpacked.

AO401/0006/P
Reflector Round
RED 76 mm 2PK

U-PART



76 mm diameter lens electro-plated metal flange. Prepacked. Also available unpacked.

AO401/0007/P
Reflector Round
WHT 76 mm 2PK

U-PART



76 mm diameter lens electro-plated metal flange. Prepacked. Also available unpacked.

AO401/0008/P
Reflector Round Yellow
76 mm 2PK

U-PART



76 mm diameter lens electro-plated metal flange. Prepacked. Also available unpacked.

AO401/0009
Reflector Round Centre Bolt Red
60 mm



60 mm Lens with steel centre bolt.

AO401/0010
Reflector Round Centre Bolt Wht
60 mm



60 mm Lens with steel centre bolt.

AO401/0011
Reflector Centre Bolt Amber
60 mm



60 mm lens with steel centre bolt.

AO401/0009/P

Reflector Round Centre Bolt

RED 60 mm 2PK

U-PART



60 mm diameter lens with electro-plated metal flange. Prepacked. Also available unpacked.

AO401/0010/P

Reflector Round Centre Bolt

WHITE 60 mm 2PK

U-PART



60 mm diameter lens with electro-plated metal flange. Prepacked. Also available unpacked.

AO401/0011/P

Reflector Round Centre Bolt

YELLOW 60mm 2PK

U-PART



60 mm lens with steel centre bolt. Prepacked. Also available unpacked.

AO401/0000

Reflective Tape SABS Price P.M

50M



Tape reflector 50m long and 55 mm wide. Price per meter.

AO401/0000/P

Reflective Trailer Tape SABS Pk 1M

1M

U-PART



Reflective tape prepack. Compulsory on all trucks, trailers, caravans, busses, etc.

AO401/0002/P

Reflective Trailer Tape SABS Pk 5M

5M

U-PART



Reflective tape prepack. Compulsory on all trucks, trailers, caravans, busses, etc.

AO401/0026

Chevron SABS Beehive

1220 mm



Fully reflective and meets the SABS 1329-4 standard. Beehive type reflector pattern ensures higher effectivity.

AO401/0025

Chevron SABS Beehive

1700 mm



Fully reflective and meets the SABS 1329-4 standard.

EMERGENCY & WARNING

AO400/7364

Light Panel Warning Red



Plastic. Easy to fit screw type connectors. Globe included.

AO400/7364/P

Light Panel Warning Red

U-PART



Plastic. Easy to fit screw type connectors. Globe included. Also available unpacked at code AO400/7364. Spare globe G601 at code AO410/9185 .

AO400/7399

Light Panel Warning Amber



Plastic. Easy to fit screw type connectors. Globe included.

AO400/7399/P

Light Panel Warning Amber

U-PART



Plastic. Easy to fit screw type connectors. Globe included. Spare globe G601 at code AO410/9185 .

AO401/0003

Warning Triangle



Plastic sturdy swivel base. Reflectors on both sides.

AO401/0003/1

Warning Triangle 3.5TON



Heavy-duty metal base. Both sides reflective.

AO400/0930

Warning Light Led Beacon Amber 12-24V SML



This LED small beacon is amber and has selectable flash patterns. The PC board is epoxy coated to extend the lifespan of the beacon.

AO400/0935

Warning Light Led Beacon Grn 12-24V SML



This LED small beacon is green and has selectable flash patterns. The PC board is epoxy coated to extend the lifespan of the beacon.

AO400/0925

Light Warning Rotate 12V Amber



Magnetic base. 12V 25W regular bulb.

EMERGENCY & WARNING

AO400/0921

Light Warning Rotate Amber



55W halogen globe 12V. Magnetic base.

AO400/0940

Warning Light Magnetic Led Beacon Kit



Permanent mount without plug,
magnetic base with plug to suit standard
automotive power outlet

821001

First Aid Domestic & Car Kit In Nylon Bag



Emergency First Aid kit ideal for home or travel use.

821005

First Aid Industrial Kit In Nylon Bag



The essential kit that complies with government regulations. Used mainly in industry, commerce and on farms.

[illegible]This image shows a single sheet of white paper with horizontal blue or grey ruling lines. The lines are evenly spaced and run across the width of the page. There are approximately 20 lines visible. The paper has a slight shadow on the right side, suggesting it's resting on a surface.

3410006

Polyweave Tarpaulin 180G

8X6M GRN

PROTARP



Double laminated polyethylene woven for extra strength. It is light and therefore facilitates handling.

Polyweave Tarpaulin 180G

PROTARP



Double laminated polyethylene woven for extra strength. It is light and therefore facilitates handling.

3410005	4X6M GRN
---------	----------

3400006	6X9M BLUE
---------	-----------

3400007	8X4M BLUE
---------	-----------

342018554

Ripstop Canvas 420gsm

1.8M x 50M - SAND

PROTARP



Medium duty, ideal for covering lighter loads.

Pvc Tarpaulin 550G Green

PROTARP



Medium-weight 550 gram material. PVC reinforced and UV stabilised. Complete with eyelets and rope.

3360014	2X3M
---------	------

3360015	3X4M
---------	------

3360018	4X5M
---------	------

3360002	4X6M
---------	------

3360001	4X7M
---------	------

3360023	4X8M
---------	------

3370004	5X6M
---------	------

3360004	6X3M
---------	------

3360003	6X8M
---------	------

3360022	6X9M
---------	------

3370007	8X10M
---------	-------

Polyweave Tarpaulin 180G

PROTARP



Double laminated polyethylene woven for extra strength. It is light and therefore facilitates handling.

3400005	4X6M BLUE
---------	-----------

3410115	2MX100M GRN
---------	-------------

3400003	2X3M BLUE
---------	-----------

3410003	2X3M GRN
---------	----------

3400004	3X4M BLUE
---------	-----------

3400012	3X5M BLUE
---------	-----------

342018223

Ripstop Canvas 420gsm

1.8M x 50M - OLIVE

PROTARP



Medium duty, ideal for covering lighter loads.

3430001

Bakkie Net

2X3M

PROTARP



These nets are made from polyethylene ski rope 5mm braid thickness and 125mm mesh size.

3430002

Bakkie Net

3X4M

PROTARP



These nets are made from polyethylene ski rope 5mm braid thickness and 125mm mesh size.

AO625/7192

Radiator Protector

500X800MM

NET SEED



Interlinkable. Shock cord to tension around the back of bull bar or radiator. Complete with j-hooks and d-rings for securing.

AO625/7198

Radiator Protector

1000X800MM

NET SEED



Interlinkable. Shock cord to tension around the back of bull bar or radiator. Complete with j-hooks and d-rings for securing.

AO625/7159

Cargo Webbing Net Bakkie Sport Double Cab



It is a 3 ton polyester webbing net. Can be used to hold cargo down or in place.

AO625/7157

Cargo Webbing Net Bakkie Sport Long Wheel Base



It is a 3 ton polyester webbing net. Can be used to hold cargo down or in place.

3430015

Mesh Cargo Net

8MX7MX7MM X 150MM

PROTARP



These nets are made from polyethylene ski rope 7mm braid thickness and 150mm mesh size.

[illegible]

RUBBER INSERTION

930106C
Rubber Insertion Roll
1200X1.6MM 10M



All purpose rubber sheeting for commercial use and transport use e.g. on floors, counters and on the back of trucks to protect cargo.

930104C
Rubber Insertion Roll
1200X3.2MM 10M



All purpose rubber sheeting for commercial use and transport use e.g. on floors, counters and on the back of trucks to protect cargo.

930104B
Rubber Insertion Roll
1200X3.2MM 5M



All purpose rubber sheeting for commercial use and transport use e.g. on floors, counters and on the back of trucks to protect cargo.

930102A
Rubber Insertion Roll
1200X6.0MM 2M



All purpose rubber sheeting for commercial use and transport use e.g. on floors, counters and on the back of trucks to protect cargo.

AO661/0072
Mat Car Rubber Blk Universal
580X320MM



Universal black rubber car mat.

BATTERY ACCESSORIES

AO800/7239
Battery Acid
1L

QUATTRO



Quattro battery acid is a pure deionized rated 1275 formula. Recommended for all lead-cell batteries.

AO800/7242
Battery Acid
5L

QUATTRO



Quattro battery acid is a pure deionized rated 1275 formula. Recommended for all lead-cell batteries.

AO800/7236
Distilled Water

QUATTRO



Highly purified water suitable for lead acid batteries. Deionized water is the purest form of water.

AO800/7240
Distilled Water
5L

QUATTRO



Highly purified water suitable for lead acid batteries. Deionized water is the purest form of water.

AO278/0250
Battery Clamp Square Adjustable



1 x Positive and negative terminal acid protectors.

AO278/0399
Battery J-Bolt
6MM



Allows for a properly secure battery using J-bolts.

Battery Cable



Battery to starter cable.

AO251/1045	1050MM SQ25 A4018
AO251/1193	1200MM SQ25 A4019
AO252/0915	1200MM SQ40 A1019
AO251/1339	1500MM SQ25 A4021
AO252/1059	1500MM SQ40 A1021
AO252/1199	1800MM SQ40 A1023
AO251/0197	300MM SQ25 A4013
AO252/0206	300MM SQ40 A1013
AO251/0332	375MM SQ25 A4075
AO250/0469	450MM SQ16 A6014
AO251/0472	450MM SQ25 A4014
AO252/0354	450MM SQ40 A1014
AO250/0604	600MM SQ16 A6015
AO251/0626	600MM SQ25 A4015
AO252/0494	600MM SQ40 A1015
AO251/0766	750MM SQ25 A4016
AO252/0621	750MM SQ40 A1016
AO251/0901	900MM SQ25 A4017
AO252/0761	900MM SQ40 A1017

Battery Cable Coil



Battery to starter cable.

AO255/0369	BLK SQ40 PM
AO255/0210	SQ25 C0052 PM
AO255/0215	SQ25 RED PM
AO255/0372	SQ40 RED PM

BATTERY ACCESSORIES

AO610/0535

Battery Load Tester BLT 600A

HAWKINS



Maintenance shops, battery test centers, garages and fleet owners will find this rugged load tester an indispensable tool for quick and reliable analysis of flooded lead acid batteries.

AUTOPRO10-12/24

Battery Charger Auto Pro 10 12/24V

HAWKINS



The Hawkins AutoPro 10 is a 3 stage microprocessor controlled smart charger suitable for most types of batteries. It can charge either 1 x 12V or 2 x 12V batteries in series (24V).

AO610/0560

Battery Charger Auto Pro 5 12V

HAWKINS



Sophisticated charger that supplies charging energy in a precisely regulated fashion to avoid damage through gassing and a shortened service life.

AO610/0545

Battery Charger Power 10

HAWKINS



Domestic charger for 12V lead acid automotive batteries only. Taper/trickle charger - not controlled must be monitored.

AO610/0496

Battery Charger Power 8

HAWKINS



Domestic charger for 12V lead acid automotive batteries. Taper/trickle charger - not controlled must be monitored.

AO610/0500

Battery Charger Pro 15 6V/12V/24V

HAWKINS



Designed to charge up to maximum 2 x 12V batteries in series ideally suited for the small motor workshop service station small fleet operator etc.

AO610/0495

Battery Charger Smart 6

HAWKINS



Low-cost automatic electronic charger for specifically 12V lead acid automotive batteries only. Can be left connected indefinitely.

AO610/0525

Battery Charger Pro 615

HAWKINS



Robust commercial charger for maximum of 6 x 12V lead acid batteries. Operator-controlled and monitored. Not automatic.

AO610/0565

Battery Charger Smart 15 12V

HAWKINS



Automatically controlled battery charger suitable for sealed lead acid batteries as well as all automotive lead acid batteries.

BATTERY ACCESSORIES

AO610/0515
Battery Charger Pro 524

HAWKINS



The Hawkins Pro 524 is a powerful 12 & 24V battery charger designed to also Jump Start heavy motor vehicles up to 500A cranking capacity. This charger is ideally suited for the large motor workshop, service station or fleet operation, motor dealership and farms.

AO256/0769/P
Jumper Clamp Set H/Duty
 500 AMP

U-PART



Heavy duty, jumper clamp set 500 amp.

AO256/0767
Jumper Clamp Set
 120AMP

U-PART



Light duty jumper clamp set, 120 amp.

AO256/0348/P
Jumper Cable L/Duty
 200 AMP

U-PART



Battery cables to jump start vehicle and truck batteries.

AO256/0488/P
Jumper Cable Med Duty
 300 AMP

U-PART



Battery cables to jump start vehicle and truck batteries.

AO256/0623/P
Jumper Cable Med Duty
 400 AMP

U-PART



Battery cables to jump start vehicle and truck batteries.

AO256/0624/P
Jumper Cable H/Duty
 600 AMP

U-PART



Battery cables to jump start vehicle and truck batteries.

AO256/0763
Jumper Cable H/Duty
 500AMP



Jumper leads for petrol engines: 16 mm, 300A and 25 mm, 400A. Diesel engines: 40 mm, 500A.

AO627/0005R
Bottle Jack
2 TON

U-PART



This lightweight jack is ideal for lifting vehicles, heavy-duty machinery and industrial construction equipment. Designed for commercial use.

AO627/0008R
Bottle Jack
4 TON

U-PART



This lightweight jack is ideal for lifting vehicles, heavy-duty machinery and industrial construction equipment. Designed for commercial use.

AO627/0009R
Bottle Jack
6 TON

U-PART



This lightweight jack is ideal for lifting vehicles, heavy-duty machinery and industrial construction equipment. Designed for commercial use.

AO627/0011R
Bottle Jack
10 TON

U-PART



This lightweight jack is ideal for lifting vehicles, heavy-duty machinery and industrial construction equipment. Designed for commercial use.

AO627/0020R
Bottle Jack
20 TON

U-PART



This lightweight jack is ideal for lifting vehicles, heavy-duty machinery and industrial construction equipment. Designed for commercial use.

AO627/0005
Bottle Jack
2 TON

MOBI JACK



Fitted with over-load valves. For a wide range of applications - lifting bending and pushing.

AO627/0008
Bottle Jack
3 TON

MOBI JACK



Fitted with over-load valves. For a wide range of applications - lifting bending and pushing.

AO627/0010
Bottle Jack
5 TON

MOBI JACK



Fitted with over-load valves. For a wide range of applications - lifting bending and pushing.

AO627/0014
Bottle Jack
8 TON

MOBI JACK



Fitted with over-load valves. For a wide range of applications - lifting bending and pushing.

AO627/0016
Bottle Jack
12 TON

MOBI JACK



Fitted with over-load valves. For a wide range of applications - lifting bending and pushing.

AO627/0020
Bottle Jack
20 TON

MOBI JACK



Fitted with over-load valves. For a wide range of applications - lifting bending and pushing.

AO627/0022
Bottle Jack
30 TON

MOBI JACK



Fitted with over-load valves. For a wide range of applications - lifting bending and pushing.

AO627/0023R
Jack Stands
3 TON

U-PART



This lightweight jack is ideal for lifting vehicles, heavy-duty machinery and industrial construction equipment. Designed for commercial use.

AO627/0024R
Jack Stands
6 TON

U-PART



This lightweight jack is ideal for lifting vehicles, heavy-duty machinery and industrial construction equipment. Designed for commercial use.

AO400/8120
Jack Trolley 2 Ton



Standard model. Lifting range 140-356mm.

AO627/0050
Scissor Jack 600Kg
T10060



Lightweight, tough, clean to use and easy to manoeuvre. Patented one piece base plate and strengthening spacer which ensure contact of link teeth.

AO627/0000
Car Jack Hi-Lift
4X4 3 TON 60IN

U-PART



Top quality jack for lifting 4x4 vehicles and tractors.

AO800/0218

Battery Terminal Protector

200ML BLUE

SPANJAARD



Anti corrosion spray for protection and colour marking of battery terminals.

AO800/0210

Battery Terminal Protector

200ML RED

SPANJAARD



Anti corrosion spray for protection and colour marking of battery terminals.

AO800/4738

Chain & Linkage Lubricant

200ML

SPANJAARD



Aerosol. A lubricant containing a soluble form of molybdenum which penetrates like oil lubricates like grease and does not stain.

AO800/4590

Cold Zinc Galv Spray

400ML

SPANJAARD



Deposits a flexible hard 95% pure zinc coating used for the protection of steel surfaces.

AO800/3295

Grease C.V. Joint Lubricant

90G

SPANJAARD



A premium quality grease containing molybdenum disulphide for all CV joints. This lubricant is highly shock-absorbing.

AO800/4584

Grease Liquid Lubricant

400ML

SPANJAARD



Aerosol contains molybdenum disulphide and EP additives providing minimum fling-off and high water resistance.

AO800/0312

Spanjaard Penetrating Oil Spark

150ML

SPANJAARD



Aerosol. Lubricating and penetrating oil excellent rust repellent displaces water. For industrial and domestic use. Electrically non-conductive.

AO800/0300

Spanjaard Penetrating Oil Spark

300ML

SPANJAARD



Aerosol. Lubricating and penetrating oil excellent rust repellent displaces water. For industrial and domestic use. Electrically non-conductive.

AO800/2156

Spanjaard Penetrating Oil Spray

350ML

SPANJAARD



Aerosol. Penetrating and releasing spray with exceptional penetrating properties. For all bolts and nuts locks hinges etc.

AO800/2158

Belt Dressing Aerosol

400ML

SPANJAARD



A non-staining product for use on every type of flat vee belts and conveyor belts. Will prevent slippage and extends useful belt life.

AO800/5140

Spanjaard Silicone Spray

200ML

SPANJAARD



Aerosol. A high-quality silicone-based lubricant spray for use on all rubber plastic and wooden surfaces.

AO800/5149

Spanjaard Silicone Spray

400ML

SPANJAARD



Aerosol. A high-quality silicone-based lubricant spray for use on all rubber plastic and wooden surfaces.

HW2280140

Belt Dressing Sticks



Solid form belt grip compound used on drive belts to prevent slippage and ensure greater traction.

HW2280434

Belt Dressing Liquid

2.5KG



Liquid belt grip compound used on drive belts to prevent slippage and ensure greater traction.

HW2280280

Belt Dressing Liquid

500ML



Liquid belt grip compound used on drive belts to prevent slippage and ensure greater traction.

HW2280574

Belt Dressing Liquid

5KG



Liquid belt grip compound used on drive belts to prevent slippage and ensure greater traction.

HW2280728

Belt Dressing Aerosol



Aerosol belt grip compound in a spray. Can be used on drive belts to prevent slippage and ensure greater traction.

AO805/0702

Q-In-One Oil Multi Purpose

100ML



Q-IN-ONE is a high-tech general purpose lubricant for all household and industrial applications.

AO806/0908

Q10 Penetrating Oil Aerosol

150GR



Quick acting penetrating rust solvent and release agent for rusted or seized nuts, bolts, pipe fittings, etc.

AO805/0708

Q20 Penetrating Oil Aerosol

150G



Moisture repellent for protecting and removing moisture from wet ignition systems.

AO806/0050

Q20 Penetrating Oil Aerosol

300G



Moisture repellent for protecting and removing moisture from wet ignition systems.

AO806/0910

Q12 Rust Remover

200ML



Q12 removes the worst rust in minutes. No more sanding

AO806/0051

Q30-Super Protective Film



Superior protective film used for sealing and protecting electrical connections, hydraulic fittings and exposed surfaces from rust etc .

AO806/0909

Q8 Silicone Spray

150G



Repels moisture and waterproofs all surfaces. Non-staining lubricant for clis, hinges, rubber bushes and plastic fittings.

AO805/0707

Q5 Penetrating Oil Graphite

150G



Aerosol. Graphite-based quick acting penetrating and release agent for rusted nuts, bolts, pipes, fittings etc.

AO800/7169

Quickstart Aerosol

350ML



New improved formula aerosol spray for instant starting of petrol and diesel engines.

AO806/0500

Penetrating Oil Aerosol

300ML



Aerosol. Lubricating and penetrating oil excellent rust repellent displaces water. For industrial and domestic use.

AO806/0400
Penetrating Oil Aerosol
100ML

WD40



Displaces moisture. Oil goes under surface moisture and establishes a protective barrier between the moisture and the parent metal.

AO806/0405
Penetrating Oil Aerosol
200ML

WD41



Displaces moisture. Oil goes under surface moisture and establishes a protective barrier between the moisture and the parent metal.

AO806/0410
Penetrating Oil Aerosol
400ML

WD42



Displaces moisture. Oil goes under surface moisture and establishes a protective barrier between the moisture and the parent metal.

AO806/0416
Multi-Purpose Oil 3-In-1
300ML



3-IN-ONE lubricates, cleans and prevents rust.

AO800/7168
Quickstart Aerosol Molyslip
350ML

SPANJAARD



Aerosol spray for instant starting of petrol and diesel engines.

ENGINE ADDITIVES

AO800/7123

Anti-Freeze 100% Concentrate
1L

4 SEASONS



High qualitative-freeze protection for your car/tractor.

AO800/7129

Anti-Freeze 100% Concentrate
5L

4 SEASONS



High qualitative-freeze protection for your car/tractor.

AO800/7134

Anti-Freeze 100% Concentrate
20L

4 SEASONS



High qualitative-freeze protection for your car/tractor.

AO800/7103

Anti-Freeze 50% Premix
1L

4 SEASONS



High qualitative-freeze protection for your car/tractor.

AO800/7110

Anti-Freeze 50% Premix
5L

4 SEASONS



High qualitative-freeze protection for your car/tractor.

AO800/7116

Anti-Freeze 50% Premix
20L

4 SEASONS



High qualitative-freeze protection for your car/tractor.

AO800/7175

Anti-Freeze Summer Coolant
1L

KAUFMANN



High-quality 5 in 1 mixture MEG-based anti-freeze with anti-corrosion additives formulated to meet the requirements of modern cooling systems.

AO800/7177

Anti-Freeze Summer Coolant
5L

KAUFMANN



High-quality 5 in 1 mixture MEG-based anti-freeze with anti-corrosion additives formulated to meet the requirements of modern cooling systems.

AO800/7178

Anti-Freeze Summer Coolant
20LT

KAUFMANN



High-quality 5 in 1 mixture MEG-based anti-freeze with anti-corrosion additives formulated to meet the requirements of modern cooling systems.

ENGINE ADDITIVES

AO800/7181

Anti-Freeze Summer Coolant
1L

QUATTRO



High quality five-in-one mixture. 50% containing MEG-based anti-freeze with anti-corrosion additives.

AO800/7184

Anti-Freeze Summer Coolant
5L

QUATTRO



High quality five-in-one mixture. 50% containing MEG-based anti-freeze with anti-corrosion additives.

AO800/7187

Anti-Freeze Summer Coolant
20L

QUATTRO



High quality five-in-one mixture. 50% containing MEG-based anti-freeze with anti-corrosion additives.

AO800/5272

Anti Freeze 40Vol
1 LITRE

SHIELD



Anti freeze and summer coolant that contains MEG. Protects cooling systems metals including aluminium. Suitable for petrol and diesel engines.

AO800/5273

Anti Freeze 40Vol
5 LITRE

SHIELD



Anti freeze and summer coolant that contains MEG. Protects cooling systems metals including aluminium. Suitable for petrol and diesel engines.

AO800/1298

Copper Compound Additive
400ML

SPANJAARD



An anti-seize compound for threaded connections.

AO800/2137

Lead Compensator
375ML

SPANJAARD



A valve protector additive for use in older design engines when run on low lead or lead free petrol. Also cleans petrol injectors and fuel system.

AO800/2128

Diesel Additive
375ML

SPANJAARD



A diesel fuel additive which cleans injector nozzles and protects the whole fuel system including tank transfer pump injector pump etc.

AO800/2727

Gearbox & Diff Additive
100ML

SPANJAARD



An oil supplement containing molybdenum disulphide which is added to the oil of manual (not automatic) gearboxes differentials and industrial gearboxes.

ENGINE ADDITIVES

AO800/1283

Copper Compound Additive 100G

SPANJAARD



An anti-seize compound for threaded connections.

AO800/1291

Copper Compound Additive 500G

SPANJAARD



An anti-seize compound for threaded connections.

AO800/1305

Nickel Anti-Seize 500GR

SPANJAARD



High temperature anti-seize for threads.

AO800/2135

Petrol Injector Cleaner 375ML

SPANJAARD



Specifically formulated to clean and ensure optimum performance of all types of petrol injectors and injection systems.

AO800/5730

Radiator Seal Additive 375ML

SPANJAARD



Protects against all types of corrosion as well as electrolytic corrosion. Safe in aluminium engine blocks.

AO800/2735

Oil Stop Smoke 500ML

SPANJAARD



Stops oil burning. Reduces oil consumption oil smoke and coats engine parts and prevents metal to metal contact.

AO804/0047

Engine Cleaner K-2000
500ML

QUATTRO



Water-dilatable engine cleaner and tar remover.

AO804/0045/1

Engine Cleaner K-2000
5L

QUATTRO



Water-dilatable engine cleaner and tar remover.

AO804/0099

Truck & Body Detergent
5L

QUATTRO



A powerful and very economical environmentally friendly water-based detergent and degreaser.

AO804/0044

Cleaner & Multi Purpose Degreaser
1L

QUATTRO



Effectively removes oil, grease, petrol, brake fluid, hydraulic fluid, tar, ink, diesel, wax and graphite in the industry and home.

AO804/0042

Cleaner & Multi Purpose Degreaser
5L

QUATTRO



Effectively removes oil, grease, petrol, brake fluid, hydraulic fluid, tar, ink, diesel, wax and graphite in the industry and home.

AO804/0079

Degreaser Cleaner 500 + Trigger
1L

QUATTRO



Highly effective new trigger which makes it easy to reach previously hard-to-reach areas.

AO804/0080

Degreaser Cleaner 500
5L

QUATTRO



Highly effective non flammable alkaline water based degreaser and general purpose cleaner. Can be diluted up to 20:1 mixture. S.G. 1.016 pH 10.

AO804/0082

Degreaser Cleaner 500 Tube Trigger
5L

QUATTRO



Highly effective new tube and trigger which makes it easy to reach difficult places.

AO804/0085

Degreaser Cleaner 500
25L

QUATTRO



Highly effective non flammable alkaline water based degreaser and general purpose cleaner. Can be diluted up to 20:1 mixture. S.G. 1.016 pH 10.

Quattro Cleaner Acon

QUATTRO



Removes oils greases lime hard water scale deposits and metal oxides from surfaces such as copper brass aluminium and iron.

AO804/0075	1L
AO804/0078	5L

Hand Cleaner Super Grit

QUATTRO



Contains highly effective grease and ink removers and is gentle on your hands.

AO804/0049	500G
AO804/0050	1KG
AO804/0052	5KG

AO804/0065

Hand Cleaner Poly Bead

1KG

QUATTRO



Quattro poly bead hand cleaner is a composition of the finest ingredients to deep clean virtually all contamination on hands arms and face.

AO804/0020

Degreaser Industrial Cleaner Hds

5L

QUATTRO



HDS is excellent for cleaning parts, Floors, walls, engines, equipment and machinery where various oils, grease, soils etc. cause problems.

HW2140055

Hand Cleaner

500ML

FLIGHT



Excellent product for removal of grease oil and dirt.

HW2140160

Hand Cleaner

1L

FLIGHT



Excellent product for removal of grease oil and dirt.

HW2140446

Hand Cleaner

5L

FLIGHT



Excellent product for removal of grease oil and dirt.

HW2140600

Hand Cleaner Grit

500ML

FLIGHT



Excellent product for removal of grease oil and dirt. Contains grit.

HW2140610

Hand Cleaner Grit

1L

FLIGHT



Excellent product for removal of grease oil and dirt. Contains grit.

HW2140630

Hand Cleaner Grit

5L

FLIGHT



Excellent product for removal of grease oil and dirt. Contains grit.

HW2140661

Flight M7 Degreaser Pvc Bottle

500ML

FLIGHT



Heavy duty degreaser used in workshops - industry or in your garage.

HW2140662

Flight M7 Degreaser Bottle

5L

FLIGHT



Heavy duty degreaser used in workshops - industry or in your garage.

HW2140660

Flight Sprayclean

2L CHEM

FLIGHT



All purpose cleaner and degreaser for use in home office factory and workshop. It cleans stains from clothes carpets and upholstery.

HW2140650

Flight Sprayclean

500ML CHEM

FLIGHT



All purpose cleaner and degreaser for use in home office factory and workshop. It cleans stains from clothes carpets and upholstery.

AO800/5252

Handex Hand Cleaner With Grit

500G

SHIELD



Heavy duty hand cleaner that cleans the toughest dirt and grime.

AO800/5251

Handex Hand Cleaner With Grit

4.5KG

SHIELD



Heavy duty hand cleaner that cleans the toughest dirt and grime.

AO800/5292

Sheen Extreme

MUSK 750ML

SHIELD



Cleans and preserves all rubber, vinyl and plastic. Protects against cracking, dulling and fading of dashboards.

AO800/5237

Sheen

FRESH START 300ML

SHIELD



Cleans and preserves all rubber, vinyl and plastic. Protects against cracking, dulling and fading of dashboards.

AO800/5234

Sheen

STRAWBERRY 300ML

SHIELD



Cleans and preserves all rubber, vinyl and plastic. Protects against cracking, dulling and fading of dashboards.

AO800/5235

Sheen

MUSK 300ML

SHIELD



Cleans and preserves all rubber, vinyl and plastic. Protects against cracking, dulling and fading of dashboards.

AO800/5233

Sheen

CHERRY 300ML

SHIELD



Cleans and preserves all rubber, vinyl and plastic. Protects against cracking, dulling and fading of dashboards.

AO800/5236

Sheen

NU-CAR 300ML

SHIELD



Cleans and preserves all rubber, vinyl and plastic. Protects against cracking, dulling and fading of dashboards.

AO800/5240

Air Conditioning Treatment - Fogger

200ML

SHIELD



AC treatment that deodorizes and neutralizes all malodours that attach themselves to your AC filter and pipes.

AO800/5220

Xtreme Shampoo

2L

SHIELD



Car shampoo that cleans, shines and waxes in one easy operation.

AO800/5258

Auto Cleaning Kit

SHIELD



Auto cleaning pack that consists of chamois, sponge and a microfiber.

AO800/5257

Car Care Promotional Kit

SHIELD



Consisting of shampoo, chamois, sponge, air freshener and liquid car polish.

AO800/5259

Wash N Shine Kit

6 PIECE

SHIELD



Promotional car Wash 'n Shine kit.

AO800/5253

Blade All Purpose Cleaner Squeaky Green

2L

SHIELD



Formulated for use in around your home from the most delicate surfaces and materials to the toughest stains and dirt.

AO800/5254

Blade All Purpose Cleaner Squeaky Green

5L

SHIELD



Formulated for use in around your home from the most delicate surfaces and materials to the toughest stains and dirt.

AO800/5255

Blade All Purpose Cleaner Squeaky Green

25L

SHIELD



Formulated for use in around your home from the most delicate surfaces and materials to the toughest stains and dirt.

AO800/5248

Engine Cleaner - Solvent Based Liquid

500ML

SHIELD



Contains strong degreasing properties that eradicate grease and grime from all surfaces.

AO800/5247

Engine Cleaner - Water Based Liquid

500ML

SHIELD



Contains strong degreasing properties that eradicate grease and grime from all surfaces.

AO800/5222

High Foam Car Shampoo

5L

SHIELD



High foaming shampoo that clings to the surface of the vehicles paint, for increased cleaning.

AO800/5221

Splash Car Shampoo

5L

SHIELD



Contains a blend of concentrated soap and self plating waxes that act as a 2 in 1, gently cleaning and depositing a layer of wax protection.

AO800/5231

Windscreen Wash

275ML

SHIELD



Highly concentrated windscreen wash that removes insects, silicone, grease, grime and streaking on windcreens.

AO800/5228

Mag Cleaner Trigger Spray

500ML

SHIELD



Suitable on all types of mags including, sealed, clear coat alloy or plastic coated.

AO800/5243
Fresh 24 Air Freshener
VANILLA PINEAPPLE

SHIELD



Car air freshener consisting of natural oils and the finest fragrances.

AO800/5242
Fresh 24 Air Freshener
OCEAN DRIVE

SHIELD



Car air freshener consisting of natural oils and the finest fragrances.

AO800/5241
Fresh 24 Air Freshener
FOREST FANTASY

SHIELD



Car air freshener consisting of natural oils and the finest fragrances.

AO800/5244
Fresh 24 Air Freshener
COCONUT SUGAR

SHIELD



Car air freshener consisting of natural oils and the finest fragrances.

AO800/5245
Monster Fresh Air Freshener

SHIELD



Car air freshener consisting of natural oils and the finest fragrances infused in PVA.

AO800/5239
Leather Care
400ML

SHIELD



Moisturizes and cleans to leave all leather surfaces naturally rich and supple.

AO800/5224
Car Polish
200ML

SHIELD



Non abrasive and can be used on all paint surfaces and colours.

AO800/5227
Tyre Polish Paste
400ML

SHIELD



Paste wax that is safe to use on all tyres leaving natural lustre and shine.

AO800/5223
Miraplate Liquid Car Polish
500ML

SHIELD



Formulated with AO wax, produces an unrivalled shine that leaves no white powdery residue on paint.

AO800/5225

Tyre Gloss Aerosol Tyre Cleaner 400ML

SHIELD



Formulated to clean and deep shine tyres leaving them with a rich deep gloss.

AO800/5250

Tool 101 Multi Purpose Oil 125ML

SHIELD



Oil prevents rust and displaces moisture whilst penetrating and lubricating parts.

AO800/5260

Headlight Restoration Kit (10PIECE)

SHIELD



Headlight Restoration kit consisting of 1 x handheld sander, 1 x drill operated wool polishing pad, 1 x masking tape, 5 x pieces of sandpaper, 1 x microfibre cloth and 1 x 130ml Clear View plastic cleaner and polish.

AO800/5249

Tool In A Can Multi Purpose Spray 500ML

SHIELD



Multi purpose lubricant spray that prevents rust and displaces moisture whilst penetrating and lubricating parts.

AO800/5238

Upholstery Cleaner With Bristles 275ML

SHIELD



Cleaner is formulated to clean using deep penetrating fast acting foam that cleans all velour and cloth upholstery.

AO800/5178

Cleaner Lectro-Kleen Flammable 200ML

SPANJAARD



Leaves no residue. Will not attack plastics. A sophisticated cleaner especially developed for the electronics industry.

AO800/5155

Cockpit Cleaner WILD CHERRY 300ML

SPANJAARD



Aerosol. A protective spray with a cleaning action for dashboards and all plastic and rubber surfaces.

AO800/5159

Cockpit Cleaner WILD LAVENDER 300ML

SPANJAARD



Aerosol. A protective spray with a cleaning action for dashboards and all plastic and rubber surfaces.

AO800/5156

Cockpit Cleaner NEW CAR 300ML

SPANJAARD



Aerosol. A protective spray with a cleaning action for dashboards and all plastic and rubber surfaces.

AO800/2180
Brake Cleaner
500ML

SPANJAARD



A heavy duty brake system cleaning spray for cleaning drum and disc brakes, brake cables rotors and disc pad/drum lining surfaces.

AO800/2185
Carburettor Cleaner
350ML

SPANJAARD



Cleans internally and externally leaving a lubricating film for linkages and externally without dismantling.

AO800/7446
Engine Cleaner
500ML

SPANJAARD



Removes grease and grime from engines, gearboxes, garage and workshop floors etc.

AO800/5160
Extreme Kleen Cleaner
750ML

SPANJAARD



A powerful detergent cleaner. An environmentally friendly multi-purpose cleaner for the car, home office and workshop.

AO800/5232
Splash N Dash Auto Sponge

SHIELD



Multi purpose sponge with easy grip shape, high density and soft, that can be used for washing and numerous other uses.

AO800/5265
Microfibre All Purpose Cloths
10 PACK

SHIELD



Cloths are lint free, streak free, swirl free and non abrasive, offering the best finish on on your vehicle.

AO800/5266
Microfibre Wash N Dry Value Pack

SHIELD



Cloths are lint free, streak free, swirl free and non abrasive, offering the best finish on on your vehicle.

AO800/5261
Absorber P.V.A. Chamois
PLAS

SHIELD



Super absorbent PVA chamois.

AO800/5262
Absorber P.V.A. Chamois
SUPER DRY

SHIELD



Super absorbent PVA chamois.

HW2750465

Allskin Chamois In Plastic Container



Synthetic leather chamois.

AO804/0925/P

Chamois In Plastic Holder

U-PART



Synthetic chamois. Prepacked.
Unpacked available HW2750465.

HW2480492

Cotton Waste Coloured

12KG



General purpose cleaning material.

AO800/5264

Mutton Cloth

250GR

SHIELD



100% Cotton general purpose cleaning cloth.

Mutton Cloth



100% Cotton general purpose cleaning cloth.

HW2480215	1KG
HW2480200	300G
HW2480204	400G
HW2480222	500G

Mutton Cloth Coloured



100% Cotton mutton cloth with different colours.

HW2480100	300G
HW2480110	500G

HW2480310

Coloured Cotton Rags

1KG



Coloured cotton rags. General purpose cleaning material.

HW2480320

Coloured Cotton Rags

5KG



Coloured cotton rags. General purpose cleaning material.

AO800/1900

Windscreen Cleaner

50ML

SPANJAARD



Removes grease, dirt, insects etc. from windcreens. Ensures smear-free vision day and night.

AO804/0941

Squeegee Window



AO804/0941/P

Squeegee Window

U-PART



AO812/0495

Adhesive Gun Gum

200G

HOLTS



AO800/5270

Universal 4X4 Charcoal Ribbed 4 Pce Carpets

SHIELD



AO800/5269

Universal Standard Ribbed 4 Piece Carpets

SHIELD



AO800/5271

Universal Promotion Ribbed 4 Piece Carpets

SHIELD



AO800/5268

Multi Purpose Carpets 2 Piece

SHIELD



ENGINE PROTECTION

AO800/5286
2 Stroke Oil
500ML

SHIELD



For use in 2 stroke motorcycles, scooters, ATVs and lawnmowers.

AO800/5287
Automatic Transmission Fluid
500ML

SHIELD



Fully synthetic, multi-vehicle, high temperature protection, anti foaming, smooth transmission performance.

AO800/5282
Brake Cleaner
500ML

SHIELD



Cleans way grease, dirt and oily residue from brake linings, drums, disc pads and cylinders without disassembling the unit.

AO800/5281
Carb Cleaner
500ML

SHIELD



Cleans and removes sludge, dirt and carbon deposits from carburetors, chokes and PVC valves.

AO800/5280
Diesel Injector Cleaner
350ML

SHIELD



Cleans fuel injectors to help protect against injector deposits build-up and oxidation.

AO800/5284
Engine Flush
350ML

SHIELD



Protects engine surfaces during cleaning. Removes sludge, varnish and gum deposits.

AO800/5726
Radiator Flush
375ML

SPANJAARD



A highly effective radiator and cooling system cleaner. It removes rust scale and sludge and helps to prevent corrosion.

AO800/5276
Fuel System Cleaner
350ML

SHIELD



Cleans, intake valves, fuel injectors, manifolds, ports and carburettor.

AO800/5283
Instant Engine Start
375ML

SHIELD



For quick easy starting of all petrol and diesel engines.

ENGINE PROTECTION

AO800/5277

Petrol Injector Cleaner

350ML

SHIELD



Cleans intake valves and fuel injectors by dissolving tough deposits.

AO800/5288

Power Steering Fluid

500ML

SHIELD



Helps control seal swelling and protects pump parts.

AO800/5275

Radiator Flush

350ML

SHIELD



Restores cooling system to optimum performance by flushing harmful deposits.

AO800/5274

Radiator Stop Leak

350ML

SHIELD



Stops and prevents minor leaks in the radiator and cooling system.

AO800/5279

Smoke Free

500ML

SHIELD



Reduces exhaust smoke and oil consumption caused by burning oil.

AO800/5289

Universal Dot 4 Brake Fluid

200ML

SHIELD



Suitable for use in all disk, drum or ABS brake systems.

AO800/5285

Wheel Bearing Grease

500G

SHIELD



Ideal for bearings and spindles. Resistant to water washout.

AO800/4631

Engine Flush

375ML

SPANJAARD



Removes carbon and gum internally from all types of internal combustion engines.

STRAPPING & TIE DOWNS

AO625/7257

Luggage Strap Set 2 Piece

10MM 1.0M/8MM 0.8M

U-PART



General purpose round ribbon type luggage strap set with metal hooks.

AO625/7263

Luggage Strap Set 2 Piece

11MM 1.2M/10MM 1M

U-PART



General purpose round ribbon type luggage strap set with metal hooks.

AO625/7260

Strap Elastic Three Pc + Hooks

U-PART



General purpose round ribbon type luggage strap set with metal hooks.

AO625/7118

Strap Assy Ratchet S-Hook

4.5MX25MM 750KG

U-PART



Ratchet strap assembly (one part system) with plastic coated S hooks.

AO625/7231

Tie Down Ratchet Endless 25MM

3.6M

U-PART



Ratchet strap assembly (one part system) with endless webbing.

AO625/7240

Tie Down Ratchet Endless 25MM

5M

U-PART



Ratchet strap assembly (one part system) with endless webbing.

AO625/7254

Tie Down Set Ratchet

4 PIECE

U-PART



Ratchet strap assembly (one part system) with plastic coated S hooks.

AO625/7250

Tie Down Set Cambuckle

2 PIECE

U-PART



Cam buckle strap assembly with plastic coats S hooks.

AO625/7243

Tie Down Set Cambuckle

4 PIECE

U-PART



Cam buckle strap assembly with plastic coats S hooks.

STRAPPING & TIE DOWNS

AO625/7228

Tie Down Set Cambuckle 25MM
2.5M 2PC

U-PART



Cambuckle strap assembly. Minimum breaking strength of 750kg.

AO625/7162

Strap Ratchet Load Set
50MM 8MX2T

U-PART



Heavy duty ratchet strap complete for cargo securement on trucks and trailers.

AO625/7152

Strap Assy Load 4000Kg Claw
6.0MXMM

U-PART



Heavy duty load strap for cargo securement on trucks and trailers.

AO625/7158

Strap Assy Load 4000Kg Claw
9.0MXMM

U-PART



Heavy duty load strap for cargo securement on trucks and trailers (supplied with closed claw hooks).

AO625/7145

Strap Ratchet C/W Fixed End
0.5MXMM 4000KG

U-PART



Heavy duty ratchet strap for cargo securement on trucks and trailers (supplied with closed claw hooks).

AO625/7163

Ratchet Handle 50mm Only

U-PART



Ratchet for 50mm webbing

AO625/7810

Ratchet Tie Down Standard
3M 4PC GRN

SMARTSTRAPS



Standard ratchet tie-downs. Rubber-coated hooks. Abrasion resistant Smart Web webbing.

AO625/7780

Ratchet Tie Down Cambuckle
2M 2PC GREEN

SMARTSTRAPS



Standard cambuckle tie downs. Quick and easy for light duty applications. This strap is green and has a safe work load of 270kg.

AO625/7730

Ratchet Tie Down
2PC 2.5M ORANGE

SMARTSTRAPS



The ultimate Ratchet X - lightweight aluminium ratchet tie downs designed to withstand the toughest outdoor conditions.

STRAPPING & TIE DOWNS

AO625/7745

Ratchet Tie Down
4M 4PC ORANGE

SMARTSTRAPS



The ultimate Ratchet X - lightweight aluminium ratchet tie downs designed to withstand the toughest outdoor conditions.

AO625/7735

Ratchet Tie Down
4.5M ORANGE

SMARTSTRAPS



The ultimate Ratchet X - lightweight aluminium ratchet tie downs designed to withstand the toughest outdoor conditions.

AO625/7710

Ratchet Tie Down
5.5M YELLOW

SMARTSTRAPS



The ultimate Ratchet X - lightweight aluminium ratchet tie downs designed to withstand the toughest outdoor conditions.

AO625/7840

Ratchet Tie Down H/Duty Bulk
9M YELLOW

SMARTSTRAPS



Commercial grade heavy duty ratchet tie downs. Rugged heavy-gauge steel construction. High visibility yellow webbing.

AO625/7715

Ratchet Tie Down Includes Hook Keeper
9M YELLOW

SMARTSTRAPS



The ultimate Ratchet X - lightweight aluminium ratchet tie downs designed to withstand the toughest outdoor conditions.

AO625/7720

Ratchet Tie Down Pad
3M 2PC GREEN

SMARTSTRAPS



The ultimate Ratchet X - lightweight aluminium ratchet tie downs designed to withstand the toughest outdoor conditions.

AO625/7740

Ratchet Tie Down Pad
3.5M 4PC GRN

SMARTSTRAPS



The ultimate Ratchet X - lightweight aluminium ratchet tie downs designed to withstand the toughest outdoor conditions.

AO625/7785

Ratchet Tie Down Pad
4M GREEN

SMARTSTRAPS



Easier to use padded ratchet tie down. Power grip padded and ergonomically designed handle. Rubber-coated hooks.

AO625/7800

Ratchet Tie Down Pad
4M 4PC GRN

SMARTSTRAPS



Easier to use padded ratchet tie down. Power grip padded and ergonomically designed handle. Rubber-coated hooks. Lashing capacity 340kg.

STRAPPING & TIE DOWNS

AO625/7725

Ratchet Tie Down Pad
4.5M GREEN

SMARTSTRAPS



The ultimate Ratchet X - lightweight aluminium ratchet tie downs designed to withstand the toughest outdoor conditions.

AO625/7775

Ratchet Tie Down End Pad
4M GREEN

SMARTSTRAPS



Standard endless ratchet (no hooks). Great for rooftop carriers, kayaks, surfboards and wind surfers.

AO625/7790

Ratchet Tie Down Pad
3M 2PC ORANGE

SMARTSTRAPS



Easier to use padded ratchet tie down. Power grip padded and ergonomically designed handle. Rubber-coated hooks.

AO625/7795

Ratchet Tie Down Pad
4M ORANGE

SMARTSTRAPS



Easier to use padded ratchet tie down. Power grip padded and ergonomically designed handle. Rubber-coated hooks.

AO625/7760

Ratchet Tie Down Carbon
4.2M ORANGE

SMARTSTRAPS



Carbon X tie down ratchet for lighter loads.

AO625/7925

Bungee Straps
70-120CM YELLOW

SMARTSTRAPS



Patented adjustable technology. Rotating hooks keep strap flat and secure. Great for cooler boxes.

AO625/7915

Bungee Straps Adjustable
60-100CM ORANGE

SMARTSTRAPS



Patented adjustable technology and 3 x stronger than standard cords. Adjust the tension and length with a simple tug.

AO625/7900

Bungee Straps Flat
1.2M 2PC YELLOW

SMARTSTRAPS



Flat strap bungee with steel core coated hooks. No metal exposed. Double jacket cover. Flat strap reduces slipping. 2 Pack yellow bungees.

AO625/7895

Bungee Straps Flat
ASSORTMENT 10PC

SMARTSTRAPS



Flat strap bungee with steel core coated hooks. No metal exposed. Double jacket cover. Flat strap reduces slipping. Value pack assortment.

STRAPPING & TIE DOWNS

AO625/7875

Bungee Straps Standard
ASSORTMENT 10PC

SMARTSTRAPS



Value pack of standard bungee includes:
2 x 30cm cords, 2x 60cm cords, 1x
90cm cord, 1x 120cm cord and 6 mini
bungees.

AO625/7880

Bungee Straps Superstrong
60CM GREEN

SMARTSTRAPS



Super strong bungees - 3 x stronger than
standard cords. Coated steel core hook.
No metal exposed - won't scratch.

AO625/7885

Bungee Straps Superstrong
90CM ORANGE

SMARTSTRAPS



Super strong bungees - 3 x stronger than
standard cords. Coated steel core hook.
No metal exposed - won't scratch.

AO625/7890

Bungee Straps Superstrong
1.2M YELLOW

SMARTSTRAPS



Super strong bungees - 3 x stronger than
standard cords. Coated steel core hook.
No metal exposed - won't scratch.

AO625/7870

Bungee Straps Superstrong
Adjustable
ASSORTED 5PC

SMARTSTRAPS



Super strong bungees - 3 x stronger than
standard cords. Coated steel core hook.
No metal exposed - won't scratch.

AO625/7846

Braided Polypropylene Rope
6.4MM 15M

SMARTSTRAPS



Work load of 70kg and break strength
at 220kg. Low abrasion and mildew
resistent.

AO625/7847

Braided Polypropylene Rope
6.4MM 30M

SMARTSTRAPS



Work load of 70kg and break strength
at 220kg. Low abrasion and mildew
resistent.

AO625/7851

Braided Polypropylene Rope
7MM 15M

SMARTSTRAPS



Work load of 80kg and break strength
at 265kg. Low abrasion and mildew
resistent.

AO625/7852

Braided Polypropylene Rope
8MM 15M

SMARTSTRAPS



Work load of 120kg and break strength
at 365kg. Low abrasion and mildew
resistent.

STRAPPING & TIE DOWNS

AO625/7848

Braided Polypropylene Rope
8MM 30M

SMARTSTRAPS



Work load of 120kg and break strength at 365kg. Low abrasion and mildew resistant.

AO625/7849

Braided Polypropylene Rope
12MM 15M

SMARTSTRAPS



Work load of 245kg and break strength at 745kg. Low abrasion and mildew resistant.

AO625/7850

Twisted Nylon Rope
6.5MM 15M

SMARTSTRAPS



Premium grade rope. Smart packaging can be used as a storage role. Low abrasion. Mildew resistant. High strength/minimal stretch. Rope 6.4mm by 15m.

AO625/7845

Saxon Polypropylene Rope
9.5MM 15M

SMARTSTRAPS



Premium grade rope. Smart packaging can be used as a storage role. Low abrasion. Mildew resistant. High strength/minimal stretch.

AO625/7935

Knetic Recovery Rope
Bubbarope
9.1M 26TON

BUBBAROPE



Bubba rope is the toughest recovery rope you will find. 26 ton Break strength. 100% Double braided nylon rope.

AO625/7860

Tow Straps + Hooks
6M - YELLOW



Premium quality tow strap with hooks. High visibility yellow strapping.

AO625/7855

Tow Straps + Loop Ends
6M - YELLOW



Premium quality tow strap with hooks. High visibility yellow strapping.

AO625/7072

Strap Kinetic Snatch Recovery
60Mm 9MX8TON



Kinetic energy snatch recovery strap is used to recover light to severely stuck vehicles from sand and mud.

AO625/7078

Strap Kinetic Snatch Recovery
105Mm 10MX16TON



Kinetic energy snatch recovery strap is used to recover light to severely stuck vehicles from sand and mud.

STRAPPING & TIE DOWNS

AO625/7054

Strap Pull Winch Ext
60MM 5MX12000KG



Pull strap is used to recover stuck vehicles through or over obstacles.

AO625/7063

Strap Pull Winch Ext
60MM 10MX12000KG



Pull strap is used to recover stuck vehicles through or over obstacles.

AO625/7035

Tow Strap + D-Shackles
2TON 10MM

SECURETECH



Tow strap suitable for cars not exceeding 1 000kg.

AO625/7043

Tow Strap Heavy + D Shackles
4TONXMM

SECURETECH



Tow strap suitable for cars not exceeding 2 000kg.

AO625/7024

Recovery Kit Snatch 4X4 Spanset



4x4 Recovery kit consist of 1 x heavy duty Cordura bag, 1 x pair leather gloves, 1 x kinetic energy strap, 1 x pull winch extension strap and 2 x alloy bow shackles body with work load of 3 250kg.

AO625/7129

Strap Assy Ratchet
4MX25MM 500KG + HOOK



Ratchet strap assembly. Webbing width: 25MM. Minimum breaking strength: 1 000kg.

AO625/7142

Tie Down Set 2 In 1

SECURETECH



Top quality German technology Spanset tie-down kit consist of one cam buckle strap assy 25mmx4m and one ratchet type strap assy 25mmx2m.

AO625/7387

Tie Down Set 6 Pce Gift Pk

SECURETECH



The gift pack consists of 2 x endless cam buckle straps which is 4m long and have a workload limit of up to 250kg and 2x ratchet straps with loops.

AO625/7113

Tie-Down Ratchet Spanset
25MM 1TON 4MX2

SECURETECH



Ratchet strap assembly (one part system). Webbing width: 25mm. Minimum breaking strength: 1 000kg.

STRAPPING & TIE DOWNS

AO625/7155

**Gm Strap 4.5Mx50MM 3Ton
S-Hook For Overcenter Lock 4**



Replacement strap for AO625/7150.
Used to secure loads of up to 3 ton.
S-hook on both sides.

AO625/7151

**Strap 9Mx50MM 4Ton J-Hook For
Overcentre Lock**



The strap is for replacement purposes
on the unique system that latches over to
put tension on the load and is lockable as
well for safety.

AO625/7271

**Strap Storm Caravan Spanset
12M**



Strap designed as extra anchorage of
tents, gazebo's and other equipment in
strong windy conditions.

AO625/7179

**Quick Link
6MM**



Quick link mild steel zinc plated 60mm.

AO625/7183

**Quick Link
8MM**



Quick link mild steel zinc plated 60mm.

AO625/7169

**Snap Hooks / Karabine
6MM**



Snap/karabiner hook mild steel zinc
plated 60mm.

AO625/7173

**Snap Hooks / Karabine
8MM**



Snap/karabiner hook mild steel zinc
plated 60mm.

AO625/7280

**Alloy Rated Bow Shackle
4750KG**

SECURETECH



Alloy pin bow shackles to U.S. Federal
Spec RR-C-271b.

AO625/7187

**Shackle Alloy Bow
3250KG**

SECURETECH



Alloy pin bow shackles to U.S. Federal
Spec RR-C-271b.

STRAPPING & TIE DOWNS

AO625/7069

Snatch Block H/Duty

SECURETECH



Recovery snatch-block designed for use with electrical or mechanical winches.

AO625/7164

Securetech Winch Weld On Truck 4000KG

SECURETECH



Weld on winch / ratchet for cargo securement on trucks and trailers.
Minimum breaking strength: 4 000kg.

AO760/0137

Trailer Plug Male 7 Pen



Made of metal with brass contact points. Complete with rubber shroud.

AO760/0102

Trailer Plug Female 7 Pen



Made of metal with brass contact points.

AO900/1907

Pin-Dbi Duty Hitch 178mm



Double duty hitch pin, 178mm.

AO285/0436

Hitch Trailer Coupler 50mm 750Kg



Unbraked trailer coupler, 50 mm for maximum static load of 750kg.

AO285/0435

Hitch Gooseneck 50Mm 3500KG



Forged. SABS approved. Heavy-duty 50mm ball.

AO900/1902

Hitch Double Duty Standard 50Mm 750KG



Tow ball double duty standard hitch for a maximum static load of 750kg.

AO285/0430

Hitch Cover Goose Neck



Cover for gooseneck hitch.

AO760/0102/P

Connector Trailer Female 7 Pin

U-PART



Manufactured from metal with brass contact points. Prepacked. Also available unpacked at code AO760/0102.

AO760/0137/P

Connector Trailer Male 7 Pin

U-PART



Manufactured from metal with brass contact points. Complete with rubber shroud. Prepacked. Also available unpacked at code AO760/0137.

TYRE REPAIR

AO771/0145
T Handle

REMA TIP TOP



T-handle to use as an insertion tool.

AO771/0054
Tyre Repair String Inserting Tool

REMA TIP TOP



Valve inserting tool with plastic handle.

AO771/0550
Back On Track 4X4 Tyre Repair Kit



Emergency tubeless tyre repair kit.

AO771/0570/P
Tyre Repair String X5

REMA TIP TOP



Temporary repair for mounted cross-ply tyres.

AO800/5226
Mr Fixit Tyre Repair Kit

SHIELD



Contains a rasp toll, inserting needle, repair strings and rubber cement to repair all punctures.

AO771/0020
Tube Patch Oval
74X37MM N7

REMA TIP TOP



Tube patches for the repair of cycle, motorcycle, car, tractor and truck tubes.

AO771/0022
Tube Patch Oval
150X75MM N7B

REMA TIP TOP



Tube patches for the repair of cycle, motorcycle, car, tractor and truck tubes.

AO771/0400/P
Tube Patch Oval
5XF2 50X25MM

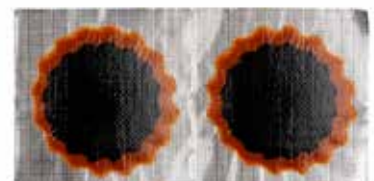
REMA TIP TOP



Tube patches for the repair of cycle, motorcycle, car, tractor and truck tubes.

AO771/0011
Tube Patch Round
25MM F1

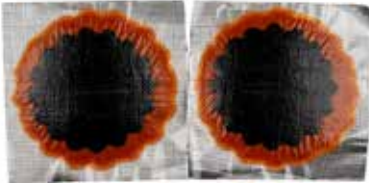
REMA TIP TOP



Tube patches for the repair of cycle, motorcycle, car, tractor and truck tubes.

AO771/0012
Tube Patch Round
30MM NO0

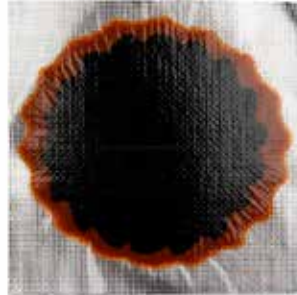
REMA TIP TOP



Tube patches for the repair of cycle, motorcycle, car, tractor and truck tubes.

AO771/0013
Tube Patch Round
35MM NO1

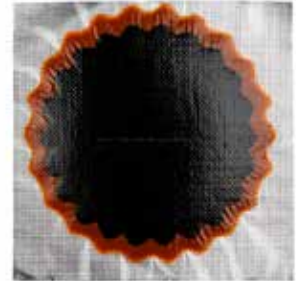
REMA TIP TOP



Tube patches for the repair of cycle, motorcycle, car, tractor and truck tubes.

AO771/0014
Tube Patch Round
45MM NO2

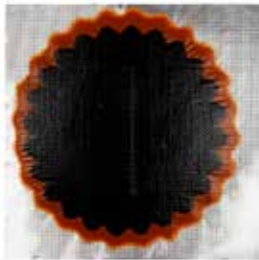
REMA TIP TOP



Tube patches for the repair of cycle, motorcycle, car, tractor and truck tubes.

AO771/0015
Tube Patch Round
54MM NO3

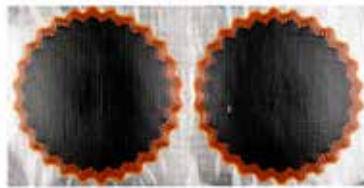
REMA TIP TOP



Tube patches for the repair of cycle, motorcycle, car, tractor and truck tubes.

AO771/0016
Tube Patch Round
75MM NO4

REMA TIP TOP



Tube patches for the repair of cycle, motorcycle, car, tractor and truck tubes.

AO771/0017
Tube Patch Round
94MM NO5

REMA TIP TOP



Tube patches for the repair of cycle, motorcycle, car, tractor and truck tubes.

AO771/0018
Tube Patch Round
116MM NO6

REMA TIP TOP



Tube patches for the repair of cycle, motorcycle, car, tractor and truck tubes.

AO771/0441/P
Tube Patch Kit Oval
4XF2 2XN7A

REMA TIP TOP



Tube patches for the repair of cycle, motorcycle, car, tractor and truck tubes.

AO771/0497/P
Tube Patch Kit Oval
4XF2 2XN7/N7A

REMA TIP TOP



Tube patches for the repair of cycle, motorcycle, car, tractor and truck tubes.

AO771/0449/P

Tube Patch Kit Round

2XNO1/4

REMA TIP TOP



Tube patches for the repair of cycle, motorcycle, car, tractor and truck tubes.

AO771/0473/P

Tube Patch Kit Round

2XNO3.1XNO4

REMA TIP TOP



Tube patches for the repair of cycle, motorcycle, car, tractor and truck tubes.

AO771/0465/P

Tube Patch Kit Round

4XF11XNO0

REMA TIP TOP



Tube patches for the repair of cycle, motorcycle, car, tractor and truck tubes.

AO771/0425/P

Tube Patch Kit Round

5XNO3 54MM

REMA TIP TOP



Tube patches for the repair of cycle, motorcycle, car, tractor and truck tubes.

AO771/0457/P

Tip Top Tube Patch Kit R/O

4XF1 2XF2

REMA TIP TOP



Prepack: 4 x F1 - AO771/0011 (round patch 25mm) 2 x F2 - AO771/0010 (oval patch 50 x 25mm).

AO771/0445/P

Tube Patch Kit

F1X3 NO 0X4 NO1X3

REMA TIP TOP



Tube patches for the repair of cycle, motorcycle, car, tractor and truck tubes.

AO771/0409/P

Tube Patch Kit Round

5XNO1 37MM

REMA TIP TOP



Tube patches for the repair of cycle, motorcycle, car, tractor and truck tubes.

AO771/0553/P

Tube Patch Kit Round

5XNO2

REMA TIP TOP



Tube patches for the repair of cycle, motorcycle, car, tractor and truck tubes.

AO771/0433/P

Tube Patch Kit Round

5XNO4 75MM

REMA TIP TOP



Tube patches for the repair of cycle, motorcycle, car, tractor and truck tubes.

AO771/0561/P

Tube Patch Kit Round

5XNO5

REMA TIP TOP



Tube patches for the repair of cycle, motorcycle, car, tractor and truck tubes.

AO771/0039

Tube Patch Kit Car/Bakkie

TT11

REMA TIP TOP



Repair kit consists of 6 x no 0 and 1 x no 7 tube patches, 1 x 6g and 1 x 30g vulc fluid and emery paper.

AO771/0040

Tube Patch Kit Car/Truck

TT12

REMA TIP TOP



Repair kit for car and truck consists of 4 x no 1, 2 x no 2, 1 x no 3, 1 x no 4, 1 x no 7 and 1 x no 7a tube patches, 13g vulc fluid and a rasp.

AO771/0041

Tube Patch Kit Truck

TT20

REMA TIP TOP



Repair kit for trucks consists of 8 x no1, 2 x no2, 1 x no3, 1 x no 4, 1 x no 5, 2 x no7, 1 x no 7a tube patches, 1 x 30g vulc fluid and 1 x rasp.

AO771/0042

Tube Patch Kit Truck

TT21

REMA TIP TOP



Repair kit for trucks consists of 8 x no1, 2 x no 2, 1 x no 3, 1 x no 4, 1 x no 5, 2 x no7 1 x no7 a tube patches 1x 30g vulc fluid and 1x rasp.

AO771/0036

Tip Top Tube Patch Kit Tour Bike

TT02

REMA TIP TOP



Repair kit for bicycle (touring) consists of 6 x no F 1 and 1 x no F 2 patches, 6g vulc fluid emery paper and valve tube.

AO771/0043

Tip Top Tube Patch Kit Tractor

TT30

REMA TIP TOP



Repair kit for tractors consists of 12 x no1, 6 x no 3, 2 x no 4, 1 x no 5, 3 x no 7, 4 x no7A and 2 x no 7B tube patches, 2 x PN 03 cross ply patches.

AO771/0046

Tubeless Repair Kit Car

TT650

REMA TIP TOP



Handy driver repair kit (TT650) for temporary repairs to mounted tires.

AO771/0048

Tip Top Tyre Tubeless Repair Kit Car

TT651

REMA TIP TOP



Driver kit (TT651) for temporary repair for mounted cross-ply tires.

AO771/0047
Tubeless Tyre Repair Kit
TT660

REMA TIP TOP



Super elastic plugs for the temporary repair of tubeless tyres. Set consist of 50 plugs.

AO771/0058
Tyre Gaiter Cross Ply Blue
60MM 1PLY UP6

REMA TIP TOP



Repair patches for durable repairs to cross-ply tires of any size. Suitable for all the current vulcanizing systems.

AO771/0059
Tyre Gaiter Cross Ply Blue
67X67MM UP8

REMA TIP TOP



Repair patches for durable repairs to cross-ply tires of any size. Suitable for all the current vulcanizing systems.

AO771/0060
Tyre Gaiter Cross Ply Blue
100MM 2PLY

REMA TIP TOP



Repair patches for durable repairs to cross-ply tires of any size. Suitable for all the current vulcanizing systems.

AO771/0061
Tyre Gaiter Cross Ply Blue
120MM 2PLY

REMA TIP TOP



Repair patches for durable repairs to cross-ply tires of any size. Suitable for all the current vulcanizing systems.

AO771/0062
Tyre Gaiter Cross Ply Blue
160MM 4PLY

REMA TIP TOP



Repair patches for durable repairs to cross-ply tires of any size. Suitable for all the current vulcanizing systems.

AO771/0093
Tyre Gaiter Cross Ply Blue
370MM 4PLY

REMA TIP TOP



Repair patches for durable repairs to cross-ply tires of any size. Suitable for all the current vulcanizing systems.

AO771/0063
Tyre Gaiter Cross Ply Blue
240MM 6PLY

REMA TIP TOP



Repair patches for durable repairs to cross-ply tires of any size. Suitable for all the current vulcanizing systems.

AO771/0092
Tyre Gaiter Cross Ply Blue
255MM 4PLY PN20

REMA TIP TOP



Repair patches for durable repairs to cross-ply tires of any size. Suitable for all the current vulcanizing systems.

AO771/0064

Tyre Gaiter Cross Ply Blue

295MM 6PLY PN07

REMA TIP TOP



Repair patches for durable repairs to cross-ply tires of any size. Suitable for all the current vulcanizing systems.

AO771/0097

Tyre Gaiter Cross Ply Blue

510MM 6PLY PN25

REMA TIP TOP



Repair patches for durable repairs to cross-ply tires of any size. Suitable for all the current vulcanizing systems.

AO771/0106

Tyre Gaiter Radial

55X75MM 1PLY 110TL

REMA TIP TOP



RAD 100 series. Repair patches for durable repairs to radial tires of all sizes and for all applications.

AO771/0105

Tyre Gaiter Radial

70X120MM 1PLY 116TL

REMA TIP TOP



RAD 100 series. Repair patches for durable repairs to radial tires of all sizes and for all applications.

AO771/0115

Tyre Gaiter Radial

80X125MM 1PLY 120TL

REMA TIP TOP



Repair patches for durable repairs to all radial tyres. Suitable for hot- or self-vulcanization.

AO771/0114

Tyre Gaiter Radial

122TL

REMA TIP TOP



Repair patches for durable repairs to all radial tyres. Suitable for hot- or self-vulcanization.

AO771/0116

Tyre Gaiter Radial

140TL

REMA TIP TOP



Repair patches for durable repairs to all radial tyres. Suitable for hot- or self-vulcanization.

AO771/0117

Tyre Gaiter Radial

142TL

REMA TIP TOP



Repair patches for durable repairs to all radial tyres. Suitable for hot- or self-vulcanization.

AO771/0065

Tyre Gaiter Cross Ply Blue

345MM 6PLY PN08

REMA TIP TOP



Repair patches for durable repairs to cross-ply tires of any size. Suitable for all the current vulcanizing systems.

AO771/0067

Tyre Gaiter Cross Ply Blue

395MM 8PLY PN09

REMA TIP TOP



Repair patches for durable repairs to cross-ply tires of any size. Suitable for all the current vulcanizing systems.

AO771/0027

Tube Vulcanising Solution

25G

REMA TIP TOP



Vulcanising fluid (free of CFC and aromatic compounds). For the vulcanization of tube patches valve patches and rubber-based valves.

AO771/0505/P

Tube Vulcanising Solution

2X5G

REMA TIP TOP



Vulcanising fluid (free of CFC and aromatic compounds). For the vulcanization of tube patches valve patches and rubber-based valves.

AO771/0537

Tube Vulcanising Solution

5GM

REMA TIP TOP



Vulcanising fluid (free of CFC and aromatic compounds). For the vulcanization of tube patches valve patches and rubber-based valves.

AO771/0026

Tube Vulcanising Solution

10 GM

REMA TIP TOP



Vulcanising fluid (free of CFC and aromatic compounds). For the vulcanization of tube patches valve patches and rubber-based valves.

AO771/0028

Tube Vulcanising Solution

50G

REMA TIP TOP



Vulcanising fluid (free of CFC and aromatic compounds). For the vulcanization of tube patches valve patches and rubber-based valves.

AO771/0509/P

Tube Vulcanising Solution

1X5G

REMA TIP TOP



Vulcanising fluid (free of CFC and aromatic compounds). For the vulcanization of tube patches valve patches and rubber-based valves.

AO771/0513/P

Tube Vulcanising Solution

1X10G

REMA TIP TOP



Vulcanising fluid (free of CFC and aromatic compounds). For the vulcanization of tube patches valve patches and rubber-based valves.

AO771/0030

Tube Vulcanising Solution

250ML

REMA TIP TOP



Vulcanising fluid (free of CFC and aromatic compounds). For the vulcanization of tube patches valve patches and rubber-based valves.

AO771/0032
Tube Vulcanising Solution
700ML

REMA TIP TOP



Vulcanising fluid (free of CFC and aromatic compounds). For the vulcanization of tube patches valve patches and rubber-based valves.

AO771/0073
Tyre Gaiter Special Cement
30G

REMA TIP TOP



Accelerator solution for the application of TIP TOP RAD PN UP repair patches.

AO771/0075
Tyre Gaiter Special Cement
250ML

REMA TIP TOP



Accelerator solution for the application of TIP TOP RAD PN UP repair patches.

AO771/0078
Tyre Gaiter Special Cement
740ML N/Brush

REMA TIP TOP



Accelerator solution for the application of REMA TIP TOP RAD, PN and UP repair patches. SPECIAL CEMENT SC-BL can be universally used for self-vulcanization starting from 18° C (65° F) through to hot vulcanization up to 150° C (300° F).

AO800/0360
Tyre Repair Tyre Fix
340ML

SPANJAARD



To repair and inflate flat tires.

AO800/5032
Tyre Repair 4X4 Tyre Fix
600ML

SPANJAARD



To repair and inflate flat tires. Suitable for conventional radial tubed and tubeless tires for all cars, light duty vehicles, trucks, 4x4, motorcycles and trailers.

AO811/0320
Tyreweld Tyre Repair
400ML

HOLTS



Repairs punctured tires quickly without having to dismantle the wheel.

AO811/0321
Tyreweld Tyre Repair 4X4
500ML

HOLTS



Repairs punctured tires quickly without having to dismantle the wheel.

AO800/5230
Tyre Jack 4X4 Emergency Tyre Inflator
500ML

SHIELD



Latex and air is deposited into the tyre to seal any puncture or hole allowing you to drive.

AO800/5229

Tyre Jack Emergency Tyre Inflator

340ML

SHIELD



Latex and air is deposited into the tyre to seal any puncture or hole allowing you to drive.

AO771/0272

Tyre Valve Tubeless Snap-In

415 42MML R



Rubber snap in tubeless valve suitable for passenger and light commercial wheel rims.

AO771/0270

Tyre Valve Tubeless Snap-In

413 42MML R



Rubber snap in tubeless valve suitable for passenger and light commercial wheel rims.

AO771/0271

Tyre Valve Tubeless Snap-In

414 49MML R



Rubber snap in tubeless valve suitable for passenger and light commercial wheel rims.

AO771/0273

Tyre Valve Tubeless Snap-In

418 62MML R



Rubber snap in tubeless valve suitable for passenger and light commercial wheel rims.

AO771/0202

Tyre Valve Rubber Base

13R CAR

SCHRADER



Cold cure repair (chemical base) tube valves.

AO771/0203

Tyre Valve Rubber Base

15R CAR

SCHRADER



Cold cure repair (chemical base) tube valves.

AO771/0206

Tyre Valve Rubber Base

150R CAR

SCHRADER



Cold cure repair (chemical base) tube valves.

AO771/0220

Valve Rubber Bae

143MM

SCHRADER



Schrader valve rubber BAE 143mm.

AO771/0209

Tyre Valve Rubber Base

175A TRUCK

SCHRADER



Cold cure repair (chemical base) tube valves.

AO771/0210

Tyre Valve Rubber Base
177A TRUCK

SCHRADER



Cold cure repair (chemical base) tube valves.

AO771/0207

Tyre Valve Rubber Base
218A TRACTOR

SCHRADER



Cold cure repair (chemical base) tube valves.

AO771/0268

Tyre Valve Metal Screw-On
1077

SCHRADER



Screw-on repair metal valve. Single bent type.

AO771/0312

Tyre Valve Liquid & Air Fitting
5791C

SCHRADER



Air-liquid valve fitting. Water adaptor with two bushings for cap threads of standard valves and core housing threads of old type valves.

AO771/0317

Tyre Valve Core Housing
CH-3

SCHRADER



Core housing CH-3. Suitable for 218A (AO771/0207) and 220A.

AO771/0289

Tyre Valve Core High Temp Short
C-1

SCHRADER



Large bore core. Short type.

AO771/0296

Tyre Valve Cap Spanner Metal
VC2

SCHRADER



Metal screw-on valve cap with valve tool.

AO771/0296/P

Valve Cap Vc-2 Screwdriver
TYPE X4

AUTOSHOP



Metal screw on valve cap with valve tool. Prepacked. Also available unpacked at code AO771/0296.

AO771/0293

Tyre Valve Cap Plastic
VC8

SCHRADER



Valve cap. VC-8 plastic without seal.

AO771/0294
Tyre Valve Cap Metal Domed
VC3

SCHRADER



Valve cap. VC-3 dome metal type with seal.

AO771/0311
Tyre Valve Clamp-In Air/Liquid
49MM

SCHRADER



Tubeless clA-in valve (air-liquid). 51mm Length. Straight.

HW1941747
Tyre Valve Tool Pcl



Primarily used for removing valves.

AO771/0250/P
Valve Tool
4 IN 1

AUTOSHOP



Tubeless snap-in tool - to be used to pull through the snap-in valve. Also available unpacked at code AO771/0250.

AO771/0250
Tyre Valve Tool 4 In 1
3522

SCHRADER



Four-in-one standard valve repair tool (steel). To cut thread on the outside of the valve extension (for dust cap) and on the inside for the valve.

Air Filter

GUD



Air filter elements for cars, light duty vehicles, trucks, tractors and industrial use.

AO599/1900	ADG1000
AO599/ADG1002	ADG1002
AO599/0916	ADG342
AO599/0940	ADG494
AO599/0942	ADG505
AO599/0944	ADG516
AO599/0943	ADG519
AO599/0950	ADG522
AO599/0956	ADG533
AO599/0959	ADG535
AO599/1025	ADG585
AO599/1076	ADG595
AO599/1103	ADG619
AO599/1106	ADG620
AO599/1184	ADG670
AO599/1178	ADG678

AO599/1179	ADG679
AO599/1180	ADG682
AO599/1181	ADG683
AO599/1175	ADG708
AO599/1174	ADG709
AO599/1244	ADG727
AO599/1293/1	ADG788
AO599/3496	ADG802
AO599/3497	ADG803
AO599/1306/6	ADG864
AO599/1306/7	ADG865
AO599/1934	ADG934
AO599/AG1044	AG1044
AO599/1963	AG1054R
AO599/0533	AG108
AO599/AG1122	AG1122
AO599/1985	AG1136R
AO599/AG1149	AG1149
AO599/AG1478	AG1478 FITS JEEP
AO599/0770	AG330
AO599/0772	AG333P
AO599/0790	AG405
AO599/0834	AG444
AO599/1116	AG631
AO599/1122	AG635
AO599/1113	AG637
AO599/1204/1	AG786
AO599/1295	AG831
AO599/1863	AG850
AO599/1941	AG943

Petrol Filter

GUD



Nylon in-line replacement petrol filters.

AO599/2971	Z29/71 BC71
AO599/4947	BC1
AO599/4949	BC2
AO599/4995	BC3
AO599/6912	Z279
AO599/0285	Z285
AO599/4951	Z29/10 BC10
AO599/4974	Z29/23 BC23
AO599/4976	Z29/24 BC24
AO599/4979	Z29/26 BC26
AO599/4953	Z29/30 BC30
AO599/4958	Z29/31 BC31
AO599/4946	Z29/5
AO599/4950	Z29/7 BC7
AO599/4960	Z29/9 BC9
AO599/6914	Z430
AO599/6970	Z439

AO599/AC46 Cabin Air Filter AC46

GUD



GUD cabin air filters clean the air passing through the vehicles ventilation system stopping contaminants including pollen, dust and fumes from entering the vehicle.

Diesel Filter

GUD



Nylon in-line replacement petrol filters.

AO599/0287	
AO599/3928/1	GP1142

AO599/7252 Roosa Master Fuel Filter G1051

GUD



Special application. Brick-like fuel filter widely used on John Deere tractors and international harvester products.

Fuel Filter

GUD



Cartridge type replacement fuel filters.

AO599/E140	E140
UK1759593	E59
AO599/E85	E85
AO599/E130	EFI E130
AO599/MP08	MP08
AO599/3926	G1017F
AO599/2331	G536
AO599/2382	G536F
AO599/2471	G543
AO599/2536	G543F
AO599/2919	G579
AO599/3109	G629
AO599/3209	G629 BULK
AO599/3511	G826
AO599/3775	G912
AO599/4385	GP184
AO599/4431	GP185
AO599/6043	Z108
AO599/6337	Z131
AO599/6566	Z137
AO599/6663	Z144
AO599/6663/1	Z145A
AO599/6804	Z180
AO599/6812	Z188
AO599/6818	Z194
AO599/6839	Z213
AO599/6845	Z219
AO599/5489	Z65
AO599/5772	Z75
AO599/5926	Z82
AO599/5924	Z83
AO599/5983	Z94

Oil Filter

GUD



Quality spin-on type oil filter elements.

AO599/M150	M150 JEEP CHEROKEE
AO599/M45	M45 CARTRIDGE
AO599/6798	Z167
AO599/6945	Z300
AO599/6930	Z319
AO599/6915	Z345
AO599/Z392	Z392
AO599/Z467	Z467
AO599/Z537	Z537
AO599/Z586	Z586
AO599/3927	G1018
AO599/3928	G1019
AO599/2587	G546
AO599/2722	G562
AO599/2920	G589
AO599/3222	G661
AO599/3443	G800
AO599/3672	G893
AO599/3849	G952
AO599/3877	G971
AO599/3897	G992
AO599/3900	G995A
AO599/3901	G996
AO599/4520	GP205
AO599/4636	GP236
AO599/6019	Z100
AO599/6108	Z111
AO599/6159	Z112
AO599/6191	Z119
AO599/6264	Z123
AO599/6620	Z143
AO599/6780	Z153
AO599/6781	Z155
AO599/6782	Z156

AO599/6788	Z164
AO599/6799	Z173
AO599/6806	Z182
AO599/6809	Z185
AO599/6817	Z193
AO599/6838	Z212
AO599/6840	Z214
AO599/6841	Z215
AO599/6843	Z217
AO599/6844	Z218
AO599/6853	Z226
AO599/6859	Z230
AO599/6859/15	Z254
AO599/6859/16	Z258
AO599/6859/18	Z259
AO599/4944	Z25A
AO599/1275	Z275
AO599/0292	Z292
AO599/4962	Z33
AO599/5012	Z34
AO599/6938	Z351
AO599/5160	Z45
AO599/5241	Z48
AO599/6965	Z519
AO599/5497	Z66
AO599/5594	Z71
AO599/5632	Z72
AO599/5675	Z73
AO599/5969	Z84
AO599/5970	Z85
AO599/5972	Z88G
AO599/5977	Z91C
AO599/5985	Z95
AO599/6859/14	Z248
AO599/6388	

AO599/4947/P
Filter
BC1

GUD



Petrol filter for automotive use.
Prepacked. Also available unpacked.

AO599/4951/P
Filter
Z29/10 BC10

GUD



Petrol filter for automotive use.
Prepacked. Also available unpacked.

AO599/4948/P
Filter
Z29/BC3

GUD



Petrol filter for automotive use.
Prepacked. Also available unpacked.

AO599/1297
Compl Filter For Diesel Storage Tank

GUD



The unit acts as a first- stage diesel filter and water separator on stationary gravity feed bulk tanks.

Filter

GUD



Fuel filter for electronic fuel injection engines.

AO599/6862	EFI E14
AO599/6873	EFI E45

Hydraulic Filter

GUD



Cartridge type hydraulic filters.

AO599/3826	G945
AO599/6183	Z117
AO599/6854	Z255

AO599/3906
Filter For CF1000
G1000

GUD



Replacement filter for GUD CF1000.

AO599/3905
Fuel Filter G1000 For Cf1000

GROZ



Replacement filter for GUD complete diesel storage tank filter.

Pump Motor Washer



Genuine leather washer.

HW1941798	30MM 1-1/4
HW1942514	36MM 1 - 1 7/16 SUPER
HW1941933	38MM 1 - 1 1/2 SENIOR
HW1942085	40MM 1-5/8

HW1950959 Paraffin Drum Pump 20L



Metal pump for paraffin.

HW1951092 Paraffin Drum Pump 220L



Metal pump for paraffin.

HW1950789 Rotary Drum Pump For Oil & Diesel

GROZ



Rotary pump. Only suitable for diesel and oil up to SAE 90. 20 Rotations deliver 5L.

HW1950775 Rapid Flo Drum Pump

GROZ



Pumps petrol diesel and light oil. Build-in filter. 2.4m Delivery hose. Delivers approximately 100 l/min.

HW1960679 Grease Pump Flex Spouts 200MM

GROZ



Without couplers. Couplers at HW1960814 (3 jaw) and HW1960911 (4 jaw). Fits Pressol and Kaufmann. M10 X 1.

HW1960709 Grease Pump Flex Spouts 300MM

GROZ



Without couplers. Couplers at HW1960814 (3 jaw) and HW1960911 (4 jaw). Fits Pressol and Kaufmann. M10 X 1.

HW1960733 Grease Pump Flex Spouts 450MM

GROZ



Without couplers. Couplers at HW1960814 (3 jaw) and HW1960911 (4 jaw). Fits Pressol and Kaufmann. M10 X 1.

HW1960911 Grease Pump 4 Jaw Coupler

GROZ



4 Jaw coupler replacement for grease gun.

GREASE & OIL PUMPS

HW1960814

Grease Pump 3 Jaw Coupler

GROZ



3 Jaw coupler replacement for grease gun.

HW1960162

Grease Pump For 15Kg Drum ICT2

ICTUS



Complete with lid, follower plate, 1.5m discharge hose and coupler for use with 15kg drum. Pressure upto 320 bar.

HW1960091

Grease Pump + Tank 15Kg ICT3

ICTUS



Complete with lid, follower plate and drum, 1.5m discharge hose and coupler. Pressure upto 320 bar.

HW1961535

Grease Pump Minilube K7-36

MACNAUGHT



Portable. Fits 5kg grease drums. 1.5m pipe with KR pistol. Built-in strainer. Develops pressure up to 10 000 PSI/690bar.

HW628KR

Grease Pump Handgun Kr

MACNAUGHT



Hand gun only suited for use with K3/ K4 and K6/K7 hand-operated pumps. Offers both high volume or high-pressure greasing.

HW1961381

Grease Pump Flexigun K29 -01

MACNAUGHT



Single hand operation. Uses bulk or cartridge grease. 450g 7 500 PI / 520bar.

HW1961390

Grease Pump Flexigun K32-01

MACNAUGHT



Single hand operation. Uses bulk or cartridge grease. 400 gr Cartridge. 7500PSI/520BAR pressure.

HW630B2

Grease Pump Booster Gun For P3+P6

MACNAUGHT



Used for high pressure delivery with any air-powered grease pump. Increases the inlet grease pressure to overcome line resistance or nipple blockages

HW1950002

Drum Pump Stroke HP-01

MACNAUGHT



For petrol and diesel. Pumps one litre per stroke. Fits 210 litre drums. Lockable handle.

HW1961810

Grease Pump Powerlube P3-10

MACNAUGHT



Fits 12.5-22kg grease drums. 4m Pipe. Operates on 60 to 125 PSI with a B2 pistol and develops pressure up to 10 000 PSI./6.90bar.

HW1961675

Grease Pump Superlube K4-10

MACNAUGHT



Portable. Fits 12.5 = 22Kg grease drums. 3m Pipe with KR pistol. Built-in strainer. Develops pressure up to 10 000 PSI./690bar.

HW1950053

Drum Pump A2-01

MACNAUGHT



Multi purpose pump that can pump SAE 90 oil. Telescopic suction pipe that fits 60 to 220L drums.

HW1950770

Drum Pump Rotary Rapid Flo 100LPM

MACNAUGHT



Pumps petrol diesel and light oil. Built-in filter 2.4m delivery pipe . Produces approximately 100litres/minute.

HW1950035

Drumpump Diesel Meter DM100-01

MACNAUGHT



The DM100 fuel meter was designed to measure diesel paraffin and petrol. Made from corrosion resistant aluminium.

HW628KR-1K

Grease Pump Rep Kit Kr Handgun

MACNAUGHT



Spare part kit.

HW625K29-1K

Grease Pump Overall Kit K29

MACNAUGHT



Service kit for Macnaught Flexigun 450g grease gun.

HW625K27-2K

Grease Pump Follower Kit K29

MACNAUGHT



Follower kit for Macnaught Flexigun, 450g grease gun.

HW626K7-2K

Grease Pump Minilube Rep Kit

MACNAUGHT



Repair kit for Macnaught Minilube grease pump.

Grease Pump K6 Repair Kit

MACNAUGHT



HW626K6-3K	Grease Pump K6 Repair Kit
HW630B2-1K	Grease Pump Repair Kit
HW628KR-2K	Grease Pump Repair Kit Kr Gun
HW629HM8S	Grease Pump Repair Kit L Stroke
HW627K3-1K	Superlube Grease Pump Rep Kit K3-1
HW627K4-1K	Superlube Grease Pump Repair Kit K4-1

HW629HO-1K Drum Pump Seal/Clevis Assy Ho

MACNAUGHT



Service kit suitable for LITRESTROKE pumps.

HW625KF14-2K Grease Pump Follower Kit K32

MACNAUGHT



Follower kit for Macnaught Flexigun, 400g grease gun.

HW630ZSB Connector

MACNAUGHT



Z-Type grease swivel. 1/8" BSP (M) x 1/4" NPT (F).

AO625/7204 Pump Hand Siphon Super Brass 2M



Top quality siphon pump with hand action.

HW1960410 Hand Type Grease Pump Grease Pump



400gr Heavy duty lever gun. Aluminium die cast head incorporates a bulk loader and an air bleeder valve. It can give 10 000PSI or 690bar.

FUEL TRANSFER

AO900/F00303M00

Viscomat 90M 230/50-60 Pump

PIUSI



Transfer and dispenses oil in vehicle tanks, quickly and safely. Suitable for workshops.

AO900/4725

Meter Digital Diesel/Water K24

PIUSI



Digital flow meter for use with low viscosity fluids. Easy to install and equipped with an easy to read compact screen.

AO900/4730

Meter Fuel K33

PIUSI



This is a rotating-disk meter that measures the exact quantity of the dispensed fuel or lubricant. It is designed for non-commercial use only.

AO900/4596

Pump Transfer 12/24V

PIUSI



Displacement self-priming rotary electric vane pump for the transfer of fuel. Equipped with by-pass valve.

AO900/4596/2

Pump Transfer 12V Battery Kit

PIUSI



Portable unit for transferring of diesel. Self priming rotary vane pump with cast iron casing.

AO900/4720

Pump Drum Diesel Transfer 12V Kit

PIUSI



Diesel fuel transfer assembly consisting of an innovative vertically installed centrifugal pump with a build-in tank connection.

AO900/4596/4

Pump Transfer 12V Battery Kit Pro Box

PIUSI



Portable fuel transfer pump for diesel fuel fitted with a 12V DC electric motor.

AO900/4596/6

Pump Transfer 24V Battery Kit 70L

PIUSI



Portable fuel transfer pump for diesel fuel fitted with a 24V DC electric motor. Max flow rate 70l/min suction capacity 2 m duty cycle 30 min.

AO900/4596/1

Pump Transfer Bi-Pump Kit 24V

PIUSI



DC fuel transfer pump displacement self-priming rotary electric vane pump for transferring diesel fuel characterised by high flow rates.

AO900/4680
Diesel Nozzle Hand Operated

PIUSI



The Self200 is today still the point of reference in the field of fuel nozzles for manual dispensing.

AO900/R11276000
Kit Nr. 5 Blades And Spring Set

PIUSI



Vane and spring kit for use with Piusi Panther 56 and Panther 72 diesel pumps.

AO900/4675
Pump Seal 6754

PIUSI



Seal for Puiasi pump.

AO900/4677
Pump Roller 6516 6Pck

PIUSI



Replacement spare part for Piusi Super Pump AO900/4603/1.

HW1951157
Paraffin Drum Pump Plastic
20 LITRE

U-PART



Plastic paraffin transfer pump.

3360001	41	AO252/0494	44	AO290/0100/P	15	AO390/1034	23	AO401/0015/P	37
3360002	41	AO252/0621	44	AO290/0101/P	14	AO390/1034/P	22	AO401/0016	36
3360003	41	AO252/0761	44	AO290/0105/P	13	AO390/1036	23	AO401/0016/P	37
3360004	41	AO252/0915	44	AO290/0123	12	AO390/1037	24	AO401/0017	36
3360014	41	AO252/1059	44	AO290/0123/P	12	AO390/1174	23	AO401/0017/P	37
3360015	41	AO252/1199	44	AO290/0132	12	AO390/1174/P	22	AO401/0018	35
3360018	41	AO255/0210	44	AO290/0132/P	12	AO390/1603	23	AO401/0018/P	36
3360022	41	AO255/0215	44	AO290/0141	12	AO390/1603/P	22	AO401/0019	35
3360023	41	AO255/0369	44	AO290/0141/P	12	AO390/1610	23	AO401/0019/P	36
3370004	41	AO255/0372	44	AO290/0152	12	AO390/1610/P	22	AO401/0020	35
3370007	41	AO256/0348/P	46	AO290/0152/P	12	AO400/0254	21	AO401/0020/P	36
3400003	41	AO256/0488/P	46	AO290/0162	12	AO400/0921	40	AO401/0025	38
3400004	41	AO256/0623/P	46	AO290/0162/P	13	AO400/0925	39	AO401/0026	38
3400005	41	AO256/0624/P	46	AO290/0175	13	AO400/0930	39	AO410/0455	20
3400006	41	AO256/0763	46	AO290/0175/P	13	AO400/0935	39	AO410/0455/P	20
3400007	41	AO256/0764	34	AO290/0303	13	AO400/0940	40	AO410/0772	19
3400012	41	AO256/0764/P	34	AO290/0303/P	13	AO400/1072	21	AO410/0772/P	19
3410003	41	AO256/0765	34	AO290/0304	13	AO400/4550	3	AO410/1338	20
3410005	41	AO256/0765/P	34	AO290/0304P	13	AO400/4550/P	3	AO410/1338/P	20
3410006	41	AO256/0766	34	AO290/0305	13	AO400/4616	3	AO410/1893	20
3410115	41	AO256/0766/P	34	AO290/0305/P	14	AO400/4616/P	3	AO410/1893/P	20
342018223	41	AO256/0767	46	AO290/0306	14	AO400/4950	21	AO410/2466	20
342018554	41	AO256/0769/P	46	AO290/0306/P	14	AO400/4952	21	AO410/2466/P	20
3430001	42	AO257/0254	30	AO290/0307	14	AO400/4953	21	AO410/3896	18
3430002	42	AO257/0394	30	AO290/0307/P	14	AO400/4958	21	AO410/3896/P	18
3430015	42	AO257/0394/P	30	AO290/0308	14	AO400/4959	21	AO410/4100	19
821001	40	AO257/0510	30	AO290/0308/P	14	AO400/4975/P	21	AO410/5031	18
821005	40	AO257/1250	31	AO290/0548	16	AO400/7364	39	AO410/5031/P	18
930102A	43	AO257/1250/P	31	AO290/0548/P	16	AO400/7364/P	39	AO410/5783	19
930104B	43	AO257/1251/P	31	AO290/0688	16	AO400/7399	39	AO410/5783/P	19
930104C	43	AO257/1255/P	32	AO290/0688/P	16	AO400/7399/P	39	AO410/6313	18
930106C	43	AO257/1257/P	31	AO290/0823	16	AO400/8120	48	AO410/6313/P	18
AO199/0616	34	AO257/1390	30	AO290/0823/P	16	AO400/9556	21	AO410/6925	18
AO199/0616/P	34	AO257/1390/P	30	AO290/0890	16	AO400/9800	7	AO410/6925/P	18
AO199/0756	34	AO257/1392/P	31	AO290/0890/P	16	AO400/9800/P	7	AO410/6976	17
AO199/0756/P	34	AO257/1450	31	AO290/0963	16	AO401/0000	38	AO410/6976/P	18
AO199/0896	34	AO257/1450/P	31	AO290/0963/P	16	AO401/0000/P	38	AO410/7395	19
AO199/0896/P	34	AO257/1452/P	31	AO290/0971	16	AO401/0002/P	38	AO410/7395/P	19
AO199/1035	34	AO257/1455	30	AO290/0971/P	16	AO401/0003	39	AO410/9037/P	17
AO199/1035/P	34	AO257/1455/P	30	AO290/1269	14	AO401/0003/1	39	AO410/9185	17
AO199/1175	34	AO257/1457/P	31	AO290/1269/P	15	AO401/0006	36	AO410/9185/P	17
AO199/1175/P	34	AO257/1460/P	32	AO290/1404	15	AO401/0006/P	37	AO410/9321	17
AO199/1310	34	AO260/0692	3	AO290/1404/P	15	AO401/0007	36	AO410/9479	17
AO199/1310/P	34	AO260/0846	3	AO290/1552	15	AO401/0007/P	37	AO410/9479/P	17
AO199/1469	34	AO260/0986	3	AO290/1552/P	15	AO401/0008	36	AO410/9480	17
AO199/1752	34	AO260/1125	3	AO290/1692	15	AO401/0008/P	37	AO410/9480/P	17
AO250/0469	44	AO260/1126	3	AO290/1692/P	15	AO401/0009	37	AO410/9568	19
AO250/0604	44	AO260/2121	3	AO290/2430/P	15	AO401/0009/P	38	AO410/9568/P	19
AO251/0197	44	AO270/1000	7	AO300/1202	7	AO401/0010	37	AO410/9580	20
AO251/0332	44	AO270/1000/P	7	AO300/1202/P	7	AO401/0010/P	38	AO430/0019	10
AO251/0472	44	AO270/1017	7	AO330/0361	22	AO401/0011	37	AO430/0019/P	10
AO251/0626	44	AO277/0970	6	AO330/0361/P	22	AO401/0011/P	38	AO450/1843	5
AO251/0766	44	AO277/0970/P	6	AO390/0445	23	AO401/0012	35	AO450/1843/P	4
AO251/0901	44	AO277/1271	6	AO390/0739	23	AO401/0012/P	35	AO450/2270	4
AO251/1045	44	AO278/0250	44	AO390/0739/P	22	AO401/0013	35	AO450/2270/P	4
AO251/1193	44	AO278/0399	44	AO390/0887	23	AO401/0013/P	35	AO450/2831	4
AO251/1339	44	AO285/0430	77	AO390/0887/P	22	AO401/0014	35	AO450/2831/P	4
AO252/0206	44	AO285/0435	77	AO390/0890	23	AO401/0014/P	35	AO450/3412	5
AO252/0354	44	AO285/0436	77	AO390/0890/P	22	AO401/0015	36	AO450/3413	5

AO450/3413/P	4	AO599/2920	91	AO599/5983	91	AO599/E140	91	AO625/7271	75
AO450/3916	4	AO599/2971	90	AO599/5985	91	AO599/E85	91	AO625/7280	75
AO450/3916/P	4	AO599/3109	91	AO599/6019	91	AO599/M150	91	AO625/7387	74
AO450/4427	5	AO599/3209	91	AO599/6043	91	AO599/M45	91	AO625/7710	70
AO450/4427PRE/P	4	AO599/3222	91	AO599/6108	91	AO599/MP08	91	AO625/7715	70
AO450/4440	5	AO599/3443	91	AO599/6159	91	AO599/Z392	91	AO625/7720	70
AO450/4490	5	AO599/3496	90	AO599/6183	92	AO599/Z467	91	AO625/7725	71
AO450/4567	5	AO599/3497	90	AO599/6191	91	AO599/Z537	91	AO625/7730	69
AO599/0285	90	AO599/3511	91	AO599/6264	91	AO599/Z586	91	AO625/7735	70
AO599/0287	90	AO599/3672	91	AO599/6337	91	AO600/1020/P	3	AO625/7740	70
AO599/0292	91	AO599/3775	91	AO599/6388	91	AO610/0495	45	AO625/7745	70
AO599/0533	90	AO599/3826	92	AO599/6566	91	AO610/0496	45	AO625/7760	71
AO599/0770	90	AO599/3849	91	AO599/6620	91	AO610/0500	45	AO625/7775	71
AO599/0772	90	AO599/3877	91	AO599/6663	91	AO610/0515	46	AO625/7780	69
AO599/0790	90	AO599/3897	91	AO599/6663/1	91	AO610/0525	45	AO625/7785	70
AO599/0834	90	AO599/3900	91	AO599/6780	91	AO610/0535	45	AO625/7790	71
AO599/0916	90	AO599/3901	91	AO599/6781	91	AO610/0545	45	AO625/7795	71
AO599/0940	90	AO599/3905	92	AO599/6782	91	AO610/0560	45	AO625/7800	70
AO599/0942	90	AO599/3906	92	AO599/6788	91	AO610/0565	45	AO625/7810	69
AO599/0943	90	AO599/3926	91	AO599/6798	91	AO625/6298	3	AO625/7840	70
AO599/0944	90	AO599/3927	91	AO599/6799	91	AO625/7024	74	AO625/7845	73
AO599/0950	90	AO599/3928	91	AO599/6804	91	AO625/7035	74	AO625/7846	72
AO599/0956	90	AO599/3928/1	90	AO599/6806	91	AO625/7043	74	AO625/7847	72
AO599/0959	90	AO599/4385	91	AO599/6809	91	AO625/7054	74	AO625/7848	73
AO599/1025	90	AO599/4431	91	AO599/6812	91	AO625/7063	74	AO625/7849	73
AO599/1076	90	AO599/4520	91	AO599/6817	91	AO625/7069	76	AO625/7850	73
AO599/1103	90	AO599/4636	91	AO599/6818	91	AO625/7072	73	AO625/7851	72
AO599/1106	90	AO599/4944	91	AO599/6838	91	AO625/7078	73	AO625/7852	72
AO599/1113	90	AO599/4946	90	AO599/6839	91	AO625/7113	74	AO625/7855	73
AO599/1116	90	AO599/4947	90	AO599/6840	91	AO625/7118	68	AO625/7860	73
AO599/1122	90	AO599/4947/P	92	AO599/6841	91	AO625/7129	74	AO625/7870	72
AO599/1174	90	AO599/4948/P	92	AO599/6843	91	AO625/7142	74	AO625/7875	72
AO599/1175	90	AO599/4949	90	AO599/6844	91	AO625/7145	69	AO625/7880	72
AO599/1178	90	AO599/4950	90	AO599/6845	91	AO625/7151	75	AO625/7885	72
AO599/1179	90	AO599/4951	90	AO599/6853	91	AO625/7152	69	AO625/7890	72
AO599/1180	90	AO599/4951/P	92	AO599/6854	92	AO625/7155	75	AO625/7895	71
AO599/1181	90	AO599/4953	90	AO599/6859	91	AO625/7157	42	AO625/7900	71
AO599/1184	90	AO599/4958	90	AO599/6859/14	91	AO625/7158	69	AO625/7915	71
AO599/1204/1	90	AO599/4960	90	AO599/6859/15	91	AO625/7159	42	AO625/7925	71
AO599/1244	90	AO599/4962	91	AO599/6859/16	91	AO625/7162	69	AO625/7935	73
AO599/1275	91	AO599/4974	90	AO599/6859/18	91	AO625/7163	69	AO627/0000	48
AO599/1293/1	90	AO599/4976	90	AO599/6862	92	AO625/7164	76	AO627/0005	47
AO599/1295	90	AO599/4979	90	AO599/6873	92	AO625/7169	75	AO627/0005R	47
AO599/1297	92	AO599/4995	90	AO599/6912	90	AO625/7173	75	AO627/0008	47
AO599/1306/6	90	AO599/5012	91	AO599/6914	90	AO625/7179	75	AO627/0008R	47
AO599/1306/7	90	AO599/5160	91	AO599/6915	91	AO625/7183	75	AO627/0009R	47
AO599/1863	90	AO599/5241	91	AO599/6930	91	AO625/7187	75	AO627/0010	47
AO599/1900	90	AO599/5489	91	AO599/6938	91	AO625/7192	42	AO627/0011R	47
AO599/1934	90	AO599/5497	91	AO599/6945	91	AO625/7198	42	AO627/0014	47
AO599/1941	90	AO599/5594	91	AO599/6965	91	AO625/7204	96	AO627/0016	48
AO599/1963	90	AO599/5632	91	AO599/6970	90	AO625/7228	69	AO627/0020	48
AO599/1985	90	AO599/5675	91	AO599/7252	90	AO625/7231	68	AO627/0020R	47
AO599/2331	91	AO599/5772	91	AO599/AC46	90	AO625/7240	68	AO627/0022	48
AO599/2382	91	AO599/5924	91	AO599/ADG1002	90	AO625/7243	68	AO627/0023R	48
AO599/2471	91	AO599/5926	91	AO599/AG1044	90	AO625/7250	68	AO627/0024R	48
AO599/2536	91	AO599/5969	91	AO599/AG1122	90	AO625/7254	68	AO627/0025R	9
AO599/2587	91	AO599/5970	91	AO599/AG1149	90	AO625/7257	68	AO627/0050	48
AO599/2722	91	AO599/5972	91	AO599/AG1478	90	AO625/7260	68	AO661/0072	43
AO599/2919	91	AO599/5977	91	AO599/E130	91	AO625/7263	68	AO750/0001/P	34

A0750/0002/P	34	A0762/0006	27	A0762/0154/P	26	A0771/0067	84	A0800/0312	49
A0750/0003/P	34	A0762/0006/P	27	A0762/0155	26	A0771/0073	85	A0800/0360	85
A0750/0004/P	34	A0762/0031	26	A0762/0155/P	26	A0771/0075	85	A0800/1283	55
A0750/0005/P	34	A0762/0031/P	26	A0762/0156	29	A0771/0078	85	A0800/1291	55
A0750/0006/P	34	A0762/0034	28	A0762/0156/P	29	A0771/0092	82	A0800/1298	54
A0750/0007/P	34	A0762/0034/P	28	A0762/0157	29	A0771/0093	82	A0800/1305	55
A0755/3961	10	A0762/0038	26	A0762/0157/P	29	A0771/0097	83	A0800/1900	64
A0755/3965	10	A0762/0038/P	26	A0762/0158	29	A0771/0105	83	A0800/2128	54
A0757/0379	10	A0762/0042	28	A0762/0158/P	30	A0771/0106	83	A0800/2135	55
A0757/0514	10	A0762/0042/P	28	A0762/0160	29	A0771/0114	83	A0800/2137	54
A0757/0808	10	A0762/0054	27	A0762/0160/P	29	A0771/0115	83	A0800/2156	49
A0757/0810	5	A0762/0054/P	27	A0762/0165	29	A0771/0116	83	A0800/2158	50
A0757/0812	5	A0762/0058	27	A0762/0165/P	29	A0771/0117	83	A0800/2180	63
A0757/0813	10	A0762/0058/P	27	A0762/0170	29	A0771/0145	78	A0800/2185	63
A0757/0815	5	A0762/0062	29	A0762/0170/P	30	A0771/0202	87	A0800/2727	54
A0757/3000	10	A0762/0062/P	29	A0762/0205	8	A0771/0203	87	A0800/2735	55
A0757/3008	10	A0762/0066	29	A0762/0240	8	A0771/0206	87	A0800/3295	49
A0757/3010	10	A0762/0066/P	29	A0770/1015	8	A0771/0207	88	A0800/4584	49
A0757/3014	10	A0762/0070	29	A0770/1155	8	A0771/0209	87	A0800/4590	49
A0757/3018	10	A0762/0070/P	29	A0770/1309	8	A0771/0210	88	A0800/4631	67
A0758/0038	33	A0762/0074	29	A0770/1461	8	A0771/0220	87	A0800/4738	49
A0758/0038/P	33	A0762/0074/P	29	A0770/1462	8	A0771/0250	89	A0800/5032	85
A0758/0040	33	A0762/0078	25	A0770/1501	8	A0771/0250/P	89	A0800/5140	50
A0758/0040/P	33	A0762/0078/P	25	A0770/1502	8	A0771/0268	88	A0800/5149	50
A0758/0042	33	A0762/0082	25	A0770/1503	8	A0771/0270	87	A0800/5155	62
A0758/0042/P	33	A0762/0082/P	25	A0770/1504	8	A0771/0271	87	A0800/5156	62
A0758/0044	33	A0762/0086	25	A0771/0011	78	A0771/0272	87	A0800/5159	62
A0758/0046	33	A0762/0086/P	25	A0771/0012	79	A0771/0273	87	A0800/5160	63
A0758/0048	33	A0762/0090	25	A0771/0013	79	A0771/0289	88	A0800/5178	62
A0758/0050	33	A0762/0090/P	26	A0771/0014	79	A0771/0293	88	A0800/5220	59
A0758/0052	33	A0762/0094	27	A0771/0015	79	A0771/0294	89	A0800/5221	60
A0758/0052/P	33	A0762/0094/P	28	A0771/0016	79	A0771/0296	88	A0800/5222	60
A0758/0056	33	A0762/0098	25	A0771/0017	79	A0771/0296/P	88	A0800/5223	61
A0758/0056/P	33	A0762/0098/P	25	A0771/0018	79	A0771/0311	89	A0800/5224	61
A0758/0058	33	A0762/0102	27	A0771/0020	78	A0771/0312	88	A0800/5225	62
A0758/0060	33	A0762/0102/P	27	A0771/0022	78	A0771/0316/P	9	A0800/5226	78
A0758/0060/P	33	A0762/0106	28	A0771/0026	84	A0771/0317	88	A0800/5227	61
A0758/0062	33	A0762/0106/P	28	A0771/0027	84	A0771/0400/P	78	A0800/5228	60
A0758/0064	33	A0762/0114	26	A0771/0028	84	A0771/0409/P	80	A0800/5229	86
A0758/0066	33	A0762/0114/P	26	A0771/0030	84	A0771/0425/P	80	A0800/5230	85
A0758/0068	33	A0762/0118	26	A0771/0032	85	A0771/0433/P	80	A0800/5231	60
A0758/0070	33	A0762/0118/P	26	A0771/0036	81	A0771/0441/P	79	A0800/5232	63
A0758/0070/P	33	A0762/0122	27	A0771/0039	81	A0771/0445/P	80	A0800/5233	59
A0758/0072	33	A0762/0122/P	27	A0771/0040	81	A0771/0449/P	80	A0800/5234	59
A0758/0074	33	A0762/0126	28	A0771/0041	81	A0771/0457/P	80	A0800/5235	59
A0758/0076	33	A0762/0126/P	28	A0771/0042	81	A0771/0465/P	80	A0800/5236	59
A0758/0078	33	A0762/0130	27	A0771/0043	81	A0771/0473/P	80	A0800/5237	58
A0759/1111	33	A0762/0130/P	27	A0771/0046	81	A0771/0497/P	79	A0800/5238	62
A0759/1113	33	A0762/0134	29	A0771/0047	82	A0771/0505/P	84	A0800/5239	61
A0759/1391	33	A0762/0134/P	30	A0771/0048	81	A0771/0509/P	84	A0800/5240	59
A0759/1537	33	A0762/0138	26	A0771/0054	78	A0771/0513/P	84	A0800/5241	61
A0759/1685	8	A0762/0138/P	26	A0771/0058	82	A0771/0537	84	A0800/5242	61
A0759/1820	8	A0762/0151	26	A0771/0059	82	A0771/0550	78	A0800/5243	61
A0760/0102	77	A0762/0151/P	26	A0771/0060	82	A0771/0553/P	80	A0800/5244	61
A0760/0102/P	77	A0762/0152	27	A0771/0061	82	A0771/0561/P	81	A0800/5245	61
A0760/0137	77	A0762/0152/P	27	A0771/0062	82	A0771/0570/P	78	A0800/5247	60
A0760/0137/P	77	A0762/0153	29	A0771/0063	82	A0800/0210	49	A0800/5248	60
A0762/0005	27	A0762/0153/P	29	A0771/0064	83	A0800/0218	49	A0800/5249	62
A0762/0005/P	27	A0762/0154	26	A0771/0065	83	A0800/0300	49	A0800/5250	62

AO800/5251	58	AO804/0044	56	AO900/4791	11	HW1950035	95	HW628KR-1K	95
AO800/5252	58	AO804/0045/1	56	AO900/4791/P	11	HW1950053	95	HW628KR-2K	96
AO800/5253	60	AO804/0047	56	AO900/4805	11	HW1950770	95	HW629HM8S	96
AO800/5254	60	AO804/0049	57	AO900/4805/P	11	HW1950775	93	HW629HO-1K	96
AO800/5255	60	AO804/0050	57	AO900/4811	11	HW1950789	93	HW630B2	94
AO800/5257	59	AO804/0052	57	AO900/4816	11	HW1950959	93	HW630B2-1K	96
AO800/5258	59	AO804/0065	57	AO900/4816/P	11	HW1951092	93	HW630Z5B	96
AO800/5259	59	AO804/0075	57	AO900/4856	11	HW1951157	98	UK1759593	91
AO800/5260	62	AO804/0078	57	AO900/4856/P	11	HW1960091	94		
AO800/5261	63	AO804/0079	56	AO900/4864	11	HW1960162	94		
AO800/5262	63	AO804/0080	56	AO900/4864/P	11	HW1960410	96		
AO800/5264	64	AO804/0082	56	AO900/4902	11	HW1960679	93		
AO800/5265	63	AO804/0085	56	AO900/4902/P	11	HW1960709	93		
AO800/5266	63	AO804/0099	56	AO900/4909	11	HW1960733	93		
AO800/5268	65	AO804/0925/P	64	AO900/4909/P	11	HW1960814	94		
AO800/5269	65	AO804/0941	65	AO900/4945	11	HW1960911	93		
AO800/5270	65	AO804/0941/P	65	AO900/4945/P	11	HW1961381	94		
AO800/5271	65	AO805/0702	50	AO900/5011	11	HW1961390	94		
AO800/5272	54	AO805/0707	51	AO900/5097	11	HW1961535	94		
AO800/5273	54	AO805/0708	51	AO900/5097/P	11	HW1961675	95		
AO800/5274	67	AO806/0050	51	AO900/5100	11	HW1961810	95		
AO800/5275	67	AO806/0051	51	AO900/5127	11	HW2140055	57		
AO800/5276	66	AO806/0400	52	AO900/5261	11	HW2140160	57		
AO800/5277	67	AO806/0405	52	AO900/5261/P	11	HW2140446	57		
AO800/5279	67	AO806/0410	52	AO900/5262	11	HW2140600	57		
AO800/5280	66	AO806/0416	52	AO900/5263	11	HW2140610	57		
AO800/5281	66	AO806/0500	51	AO900/5263/P	11	HW2140630	58		
AO800/5282	66	AO806/0908	51	AO900/7049	3	HW2140650	58		
AO800/5283	66	AO806/0909	51	AO900/7057	3	HW2140660	58		
AO800/5284	66	AO806/0910	51	AO900/7065	3	HW2140661	58		
AO800/5285	67	AO811/0320	85	AO900/7079	3	HW2140662	58		
AO800/5286	66	AO811/0321	85	AO900/7081	3	HW2280140	50		
AO800/5287	66	AO812/0495	65	AO900/7127	3	HW2280280	50		
AO800/5288	67	AO900/0117	34	AO900/7138	3	HW2280434	50		
AO800/5289	67	AO900/0125	34	AO900/7142	3	HW2280574	50		
AO800/5292	58	AO900/0133	34	AO900/7146	3	HW2280728	50		
AO800/5726	66	AO900/0133/P	34	AO900/7636	8	HW2480100	64		
AO800/5730	55	AO900/0141	34	AO900/F00303M00	97	HW2480110	64		
AO800/7103	53	AO900/0141/P	34	AO900/R11276000	98	HW2480200	64		
AO800/7110	53	AO900/0168	34	AUTOPRO10-12/24	45	HW2480204	64		
AO800/7116	53	AO900/0168/P	34	HW0280607	6	HW2480215	64		
AO800/7123	53	AO900/0176	34	HW0280623	6	HW2480222	64		
AO800/7129	53	AO900/0176/P	34	HW1940074	9	HW2480310	64		
AO800/7134	53	AO900/0184	34	HW1940236	9	HW2480320	64		
AO800/7168	52	AO900/1902	77	HW1940510	9	HW2480492	64		
AO800/7169	51	AO900/1907	77	HW1940520	9	HW2580200	6		
AO800/7175	53	AO900/4596	97	HW1940937	6	HW2580209	7		
AO800/7177	53	AO900/4596/1	97	HW1941224	10	HW2580772	6		
AO800/7178	53	AO900/4596/2	97	HW1941577	9	HW2580829	7		
AO800/7181	54	AO900/4596/4	97	HW1941593	9	HW2581442	6		
AO800/7184	54	AO900/4596/6	97	HW1941712	9	HW2750465	64		
AO800/7187	54	AO900/4675	98	HW1941747	89	HW625K27-2K	95		
AO800/7236	44	AO900/4677	98	HW1941798	93	HW625K29-1K	95		
AO800/7239	44	AO900/4680	98	HW1941933	93	HW625KF14-2K	96		
AO800/7240	44	AO900/4720	97	HW1942085	93	HW626K6-3K	96		
AO800/7242	44	AO900/4725	97	HW1942220	10	HW626K7-2K	95		
AO800/7446	63	AO900/4730	97	HW1942316	8	HW627K3-1K	96		
AO804/0020	57	AO900/4783	11	HW1942514	93	HW627K4-1K	96		
AO804/0042	56	AO900/4783/P	11	HW1950002	94	HW628KR	94		



AGRINET (PTY) LTD

Samrand | 111 Sterling Road, Samrand, 0157
Private Bag X165, Centurion 0046
T. +27 12 657 2222 | F. +27 12 657 2123
E. enquiries@agrinet.co.za

Bellville | Emerald Street, Bellville Industrial Park, Bellville South, 7530
PO Box 1300, Sanlamhof
T. +27 21 959 5420 | F. +27 21 951 4794
E. belbestel@agrinet.co.za