
CERTIFICATE OF TEST

TEST OF ONE 2 TON THOR DUAL BALL PIN TOW-HITCH

Application Received: 06 September 2007

Certificate No.: T11290

Order No.: PO 0124

Date of Test: 07 September 2007

SUBMITTED TO

Messrs HYKUE SUPPLY COMPANY (Pty) Ltd
P O Box 1017
FLORIDA
1710

INTRODUCTION

At the request of Messrs Hykue Supply Company (Pty) Ltd, one 2 ton thor dual ball pin tow-hitch was submitted for tensile testing to destruction.

TEST PROCEDURE

Testing Machine: 1000 kN Amsler Universal testing machine
Test Type: Destruction in tension

The thor dual ball pin tow-hitch assembly was installed in a 1000 kN Amsler Universal testing machine using suitable fittings. A gradually increasing tensile load was applied to the assembly until failure occurred.

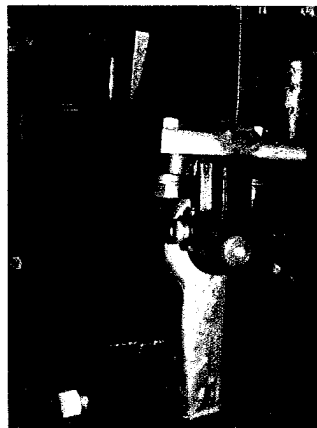


Photo 1: Thor dual ball pin tow-hitch installed in the testing machine

Notice:
ONLY the original signed report must be
regarded as the official document.

Testing Officer: 
Engineer: 

TEST RESULTS

Maximum load carried: 242.0 kN
Test comments: The ball pin bent

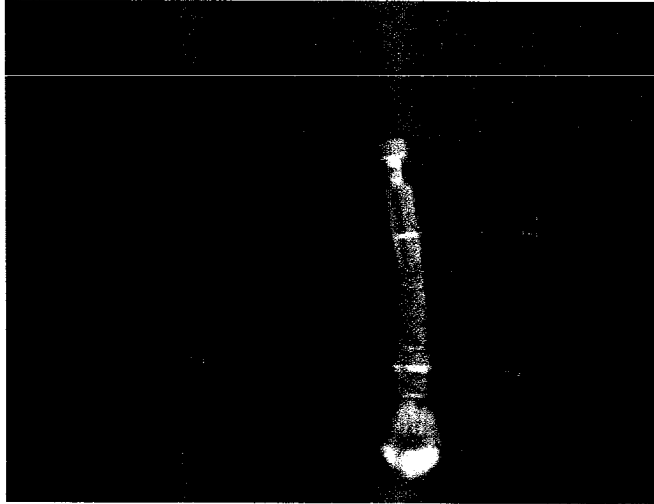

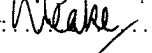


Photo 2: Thor dual ball pin tow-hitch after the test

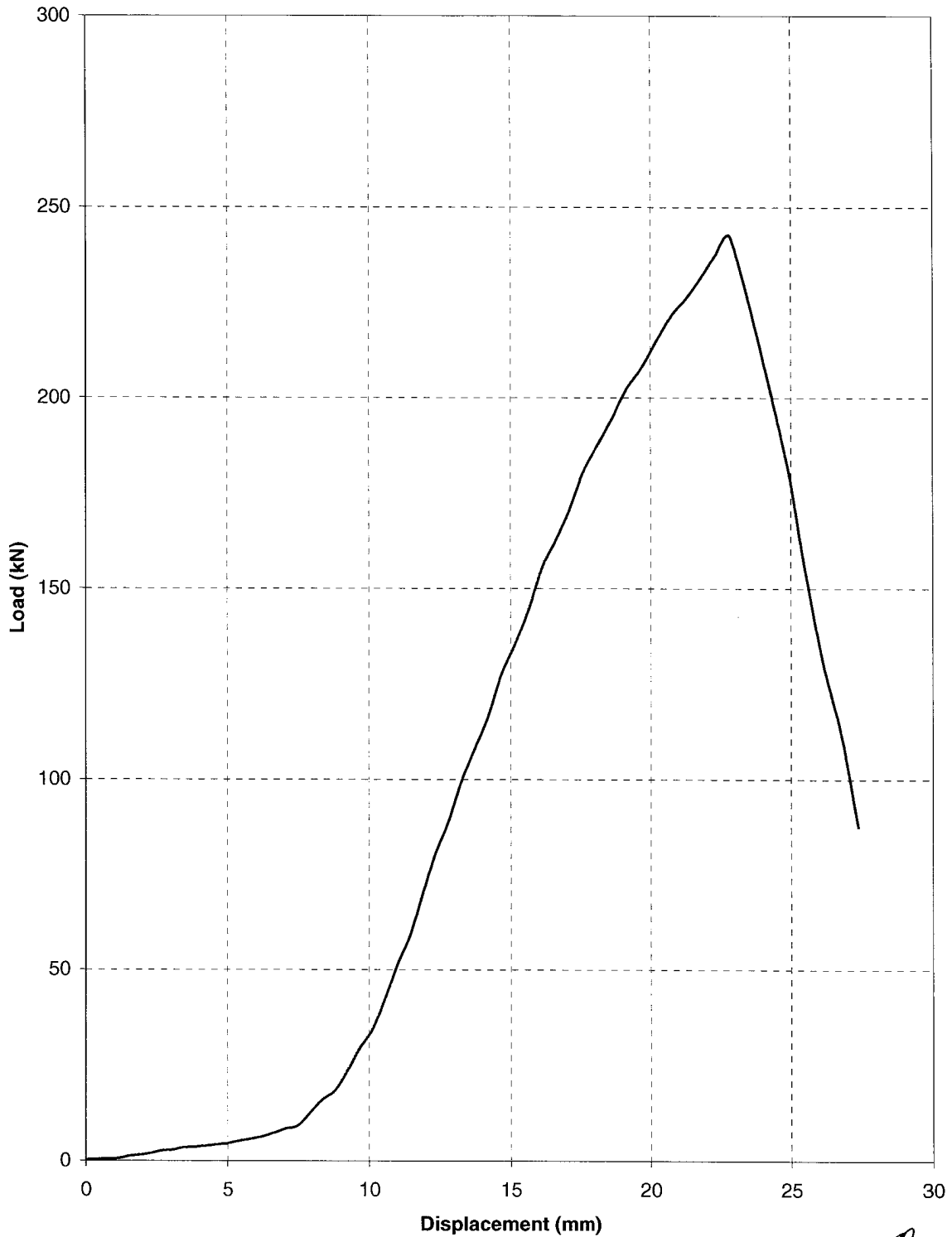
DISCLAIMER

1. The CSIR cannot be held responsible for product indifferences and cannot be held responsible for any accidents or incidents as a result thereof.
2. All CSIR standard terms and conditions of testing apply and will be forwarded upon request.
3. Due to the limited amount of sample(s) tested and the type of testing done, CSIR can only accept responsibility for the results from those specific samples tested.

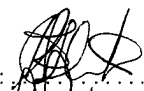
Notice:
ONLY the original signed report must be regarded as the official document.


Testing Officer: 
Engineer: 

Certificate No.: T11290
Date of test: 07 September 2007
Applicant: Hykue Supply Company (Pty) Ltd
Description: Thor dual ball pin tow-hitch
Maximum Force: 242.0 kN

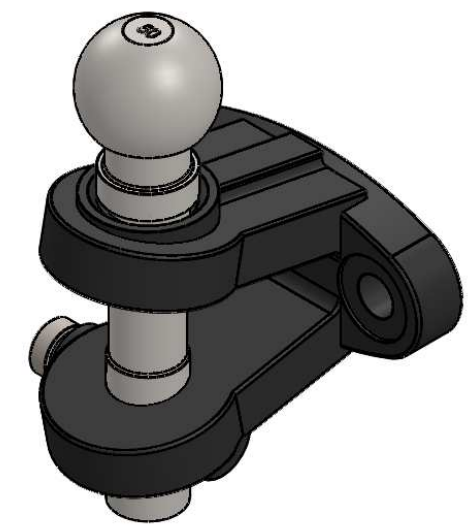
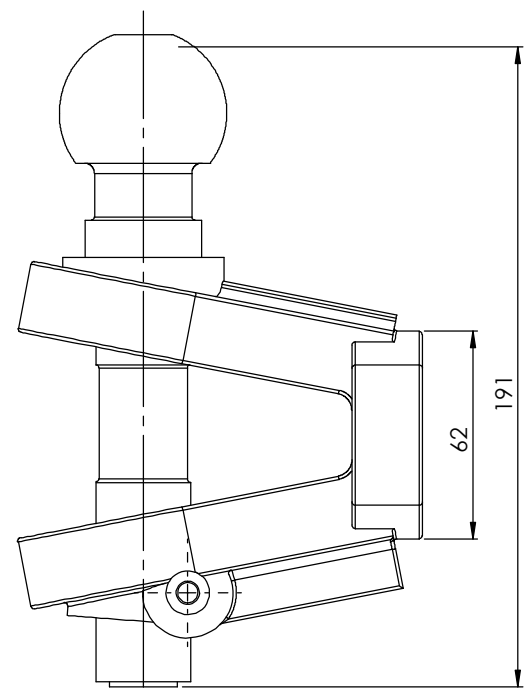
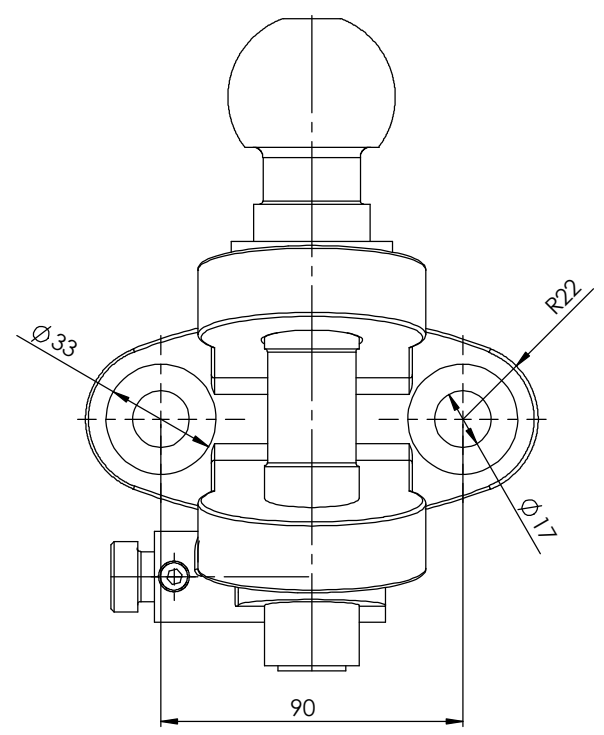
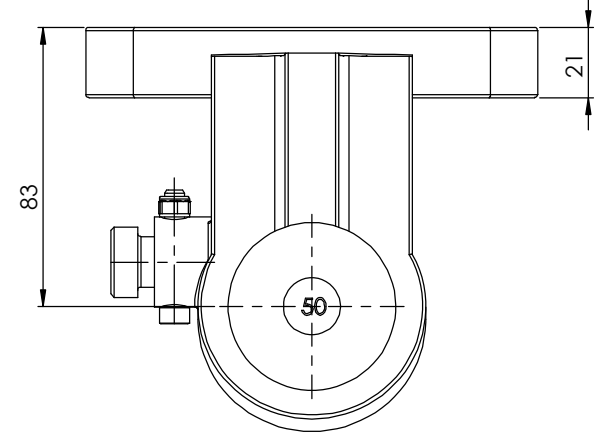


Notice:
ONLY the original signed report must be regarded as the official document.

Testing Officer: 

Engineer: 

EST MASS: TOT SURFACE AREA:



© COPYRIGHT BURQUIP INTERNATIONAL (Pty) Ltd

TITLE:

BURQUIP

ASSUME A TOLERANCE OF ±1mm FOR DIMENSIONS WITHOUT TOLERANCES ALL DIMENSIONS IN mm UNLESS OTHERWISE SHOWN

PRODUCT: **PIN & BALL COMB.**

SCALE: 1:2 SHEET: A3
DRAWN BY: ARNOLD KABUYA
DATE: 2018-08-29

DRAWING NO. **NTL014**

REV **P1**

REV	DESCRIPTION OF CHANGE	ZONE	AUTH NO.	BY	DATE
P1	RELEASED				